

Interior Assembly

Part Number	Description	Min. Qty.	Master Pack Qty.
TLM1212U2	Interior, 12 circuit, 100–125 A, Cu	1	10
THDWRKIT2	Interior Mounting Screw Kit	10	10

Front Assembly

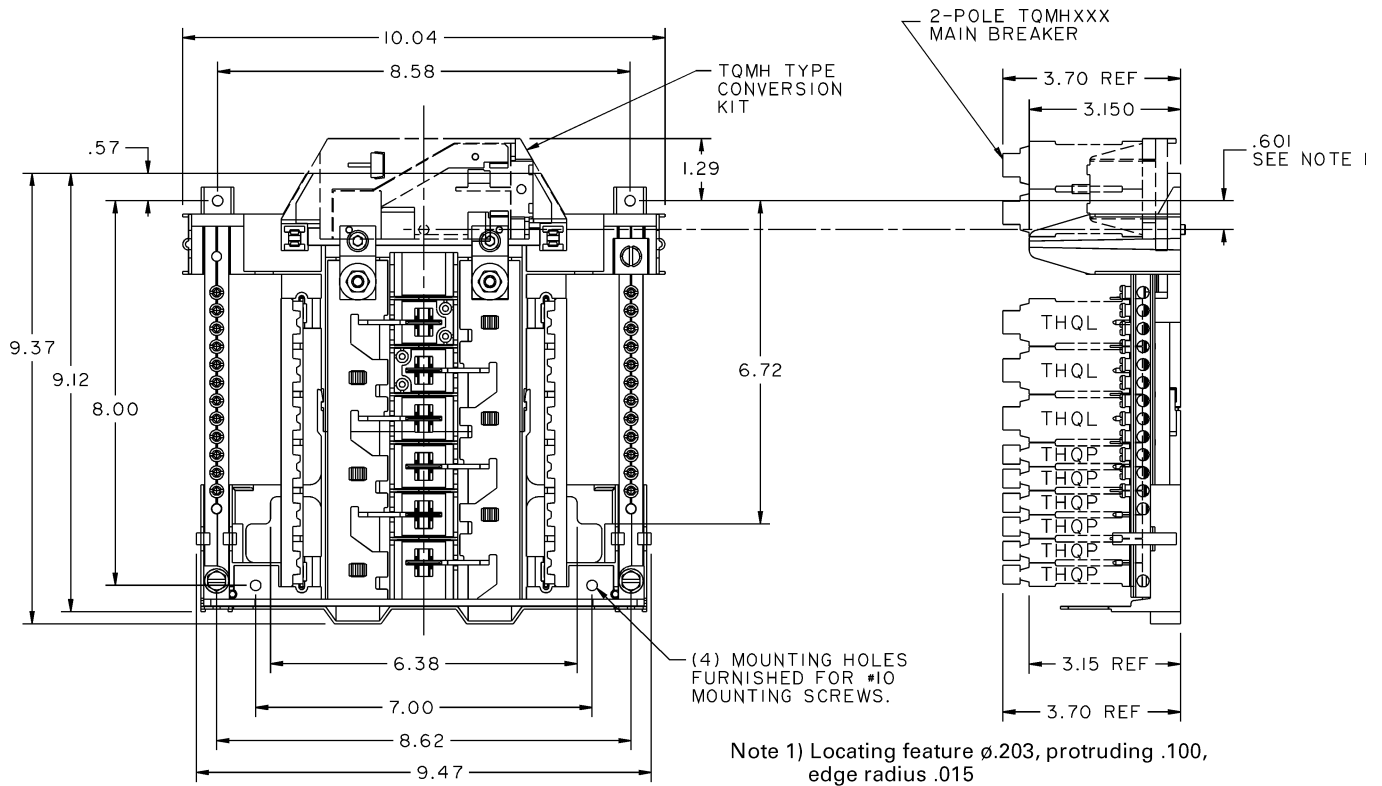
TLM12BC TM12FC	Assembly, Front and Pan For convertible main For main breaker units	1	1
139C5515P2	Door	1	1
192A6597P1	Hinge	3	1200
THDWRKIT	Front Mounting Screw Kit	20	20

Box Assembly

LC1212BOX	Box Assembly	1	40
-----------	--------------	---	----

Accessories

TBS	Bonding Screw Kit	1	1
TGK12, TGK24	Equipment Ground Kit	1	200



OEM interiors are UL-recognized components listed under UL file E21790.

Main Ampere Rating	Maximum Spaces				Total 1-Pole Spaces	Main Breaker Conv Kit
	1" THQL		1/2" THQL			
	1-Pole	2-Pole	1-Pole	2-Pole		
125	12	6	24	10	24	TQMH000