

# Type KOR-15CER

## Extended range outdoor metering current transformer

### Product features

- 25 kV outdoor, 150 kV BIL, 60 Hertz
- Primary amperes: 200 & 1000
- Electrical clearances:
  - Strike: 15.75" (400 mm)
  - Creep: 36.50" (927 mm)
- Approximate weight: 110 lbs. (50 kg)

### Application

The KOR-15CER extended range outdoor current transformer is designed for metering outdoor 25 kV systems. Ideal for use in cogeneration and in applications where there are large power exchanges, the unit preserves stated accuracies with loads ranging from one percent of the full rated current through the rating factor. The KOR-15CER provides greater value for the customer by reducing inventory requirements due to its wide operating range in conventional metering applications.

### Construction features

Primary and secondary windings are assembled around a toroidal core and attached to a support frame. For insulation and protection, the assembly is cast in hydrophobic cycloaliphatic epoxy (HCEP) using automatic pressure gelation. The HCEP material offers superior arc track, ozone, and ultraviolet-resistive properties while maintaining physical strength. The hydrophobic surface properties of HCEP ensure highly reliable performance in wet or humid conditions.

### Terminals

Primary terminals are electro-tin plated copper. Clamp-type secondary terminals accommodate #14 through #1 wire.

### Junction box

The junction box is provided with 1" conduit hubs on each end and a knock-out for fitting a conduit connection from the bottom. It may be detached for ease of installation and changeout procedures.

### Baseplate

The baseplate is constructed of corrosion-resistant aluminum and is secured to the encapsulated base support.

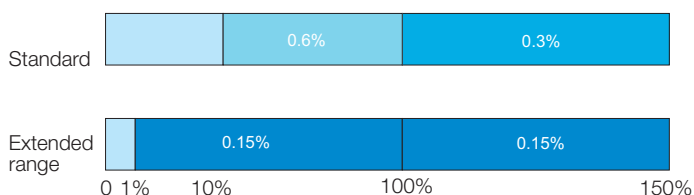
### Mounting

The KOR-15CER can be mounted in upright, cantilever, or upside-down positions. Stress relief devices should be used to support cable connections.



### Extended range

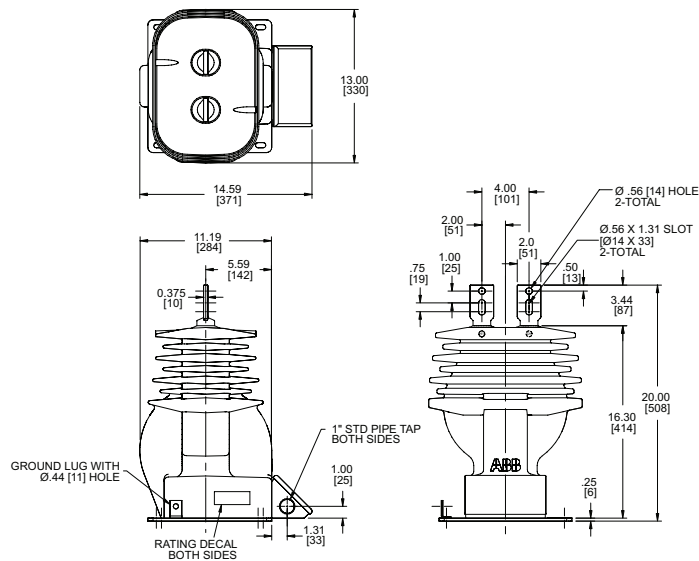
ABB's extended range design delivers high accuracy and stable performance over a wide load swing, making it a great fit for variable load applications. Accuracy is guaranteed to be  $\pm 0.15\%$  from 1% of nominal current through rating factor. ABB's extended range units deliver savings through improved accuracy metering and reduced inventory.



### Benefits of HCEP

- Enhanced water shedding properties
- Reduced contamination-related leakage currents
- Improved product quality and reliability
- Improved UV protection
- Results in a more consistent and reliable product
- Reduced loss of revenue from downtime
- Provides inventory cost savings

Unit dimensions



Type KOR-15CER

Selection guide

Primary ampere rating	Rating factor @ 30° C	Metering accuracy*	Mechanical rating+	Style number
200	1.5	0.15B-1.8	290	E-923A432G01
1000	1.5	0.15B-1.8	290	E-923A432G02

Relay accuracy: not to be used for relay applications

Thermal rating: 100 x rated current

\* Accuracy range: 1% to 150% I<sub>RATED</sub>

+ times normal

For 50 Hz styles, contact the factory.

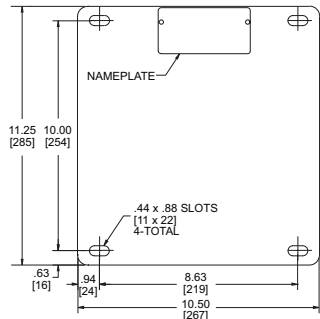
Additional styles available upon request. Contact your ABB sales representative or call +1-252-827-3212 for more information.

Test reports

Test reports are stored electronically and can be e-mailed in various formats at the time of shipment.

Standards

This unit can be tested to all applicable IEEE, CSA, or IEC standards as requested. This unit is tested in accordance with IEEE C57.13.6-2005 for high accuracy instrument transformers.



Baseplate dimensions

For more information please contact:

**ABB Inc.**  
**Medium Voltage Distribution Components**  
3022 NC 43 North  
Pinetops, NC 27864  
USA  
Phone: +1 252 827 3212  
Fax: +1 252 827 4286

[www.abb.com/mediumvoltage](http://www.abb.com/mediumvoltage)

Note:

The information contained in this document is for general information purposes only. While ABB strives to keep the information up to date and correct, it makes no representations or warranties of any kind, express or implied, about the completeness, accuracy, reliability, suitability or availability with respect to the information, products, services, or related graphics contained in the document for any purpose. Any reliance placed on such information is therefore strictly at your own risk. ABB reserves the right to discontinue any product or service at any time.

Copyright 2008 ABB.  
All rights reserved.