

# 30.5 mm Push Buttons

## Custom-Built Stations/Enclosures

### Custom-Built Stations (800H only)



#### Cat. No.

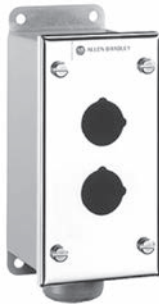
The cat. no. used to identify custom-built Bulletin 800H push button stations will be cat. no. listed for enclosure only. The letter **W** is substituted for the letter **Z** and a station serial no. will be added.

#### Ordering Information

The following information is required when ordering custom-built push button stations:

1. Cat. no. of enclosure.
2. Cat. no. of control units.
3. Legend plate cat. no. and/or marking for each unit.
4. Specify vertical/horizontal mounting.
5. Specify operator mounting sequence that you want. Including a sketch is recommended. If information not given, standard configuration will be used.

### Enclosures (800H only)



*Stainless Steel*  
Cat. No. 800H-2HZ4



*Rosite Glass Polyester*  
Cat. No. 800H-2HZ4R



*Fiberglass*  
Cat. No. 800H-2HZ4Y



*Thermoplastic Polyester*  
Cat. No. 800H-2HZ4C

No. of Operator Openings	Conduit Hubs		Stainless Steel (#304) Type 4/4X/13*	Rosite Glass Polyester Type 4/4X/13	No. of Operator Openings	Conduit Openings		Fiberglass* Type 4/4X/13	Thermoplastic Polyester* Type 4/4X
	No.	Dia. [in.]	Cat. No.	Cat. No.		No.	Dia. [in.]‡	Cat. No.	Cat. No.
0§	1	3/4	800H-0HZ4	—	1	1	3/4	800H-1HZ4Y	800H-1HZ4C
1	1	3/4	800H-1HZ4	800H-1HZ4R	2	1	1	800H-2HZ4Y	800H-2HZ4C
1	2	3/4	—	800H-1HZ4RM1	3	1	1	800H-3HZ4Y	800H-3HZ4C
1	1	1	—	800H-1HZ4RM2	4	—	—	—	800H-4HZ4C
2	1	3/4	800H-2HZ4	800H-2HZ4R	—	—	—	—	—
2	2	3/4	800H-2HZ4M1	800H-2HZ4RM1	—	—	—	—	—
2	1	1	800H-2HZ4M2	800H-2HZ4RM2	—	—	—	—	—
3	1	3/4	800H-3HZ4	800H-3HZ4R	—	—	—	—	—
3	2	3/4	800H-3HZ4M1	800H-3HZ4RM1	—	—	—	—	—
4	1	3/4	800H-4HZ4	800H-4HZ4R	—	—	—	—	—
4	2	3/4	800H-4HZ4M1	800H-4HZ4RM1	—	—	—	—	—
5	1	1	800H-5HZ4	—	—	—	—	—	—
6	1	1	800H-6HZ4	800H-6HZ4R	—	—	—	—	—
7	1	1	800H-7HZ4	—	—	—	—	—	—
8	1	1	800H-8HZ4	—	—	—	—	—	—

**Note:** Other combinations of conduit hub sizes are available upon request. Enclosure and conduit dimensions are detailed on page 10-61.

\* Grounding screw provided with stainless steel enclosure.

⊗ Extra deep. Accommodates two levels of stackable sealed switch contact blocks.

‡ Conduit hubs must be ordered separately. For 3/4 in. hub, order **Cat. No. 1490-N9**. For 1 in. hub, order **Cat. No. 1490-N10**.

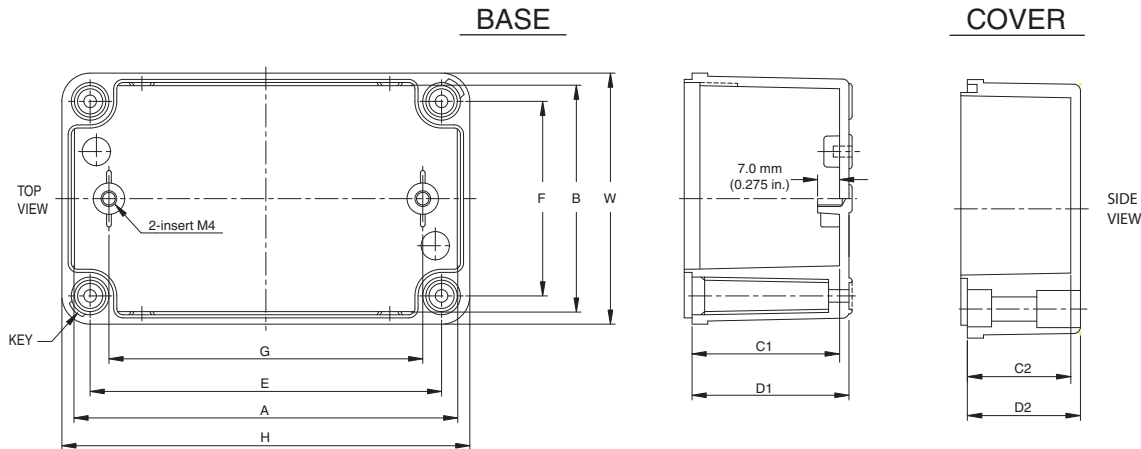
§ Identical to **Cat. No. 800H-1HZ4** but without mounting holes.

♣ No conduit openings provided.

➤ Yellow thermoplastic enclosures may be ordered by adding a **Y** to the cat. no. Example: **Cat. No. 800H-1HZ4C** becomes **Cat. No. 800H-1HZ4CY**.

Dimensions are shown in millimeters (inches). Dimensions are not intended to be used for manufacturing purposes.

**Enclosures (Bul. 800H Only), Continued**

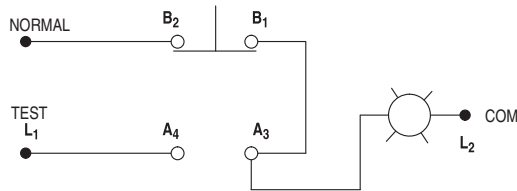


Thermoplastic Polyester Type 4/4X

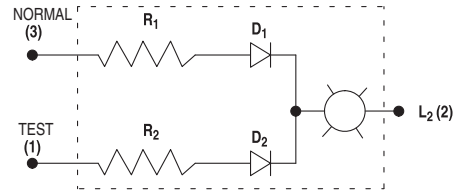
Cat. No.	Overall Dimension				Inside Dimension				Enclosure Mounting Dimension		Mounting Plate Mounting Dim.
	H	W	D1	D2	A	B	C1	C2	E	F	
800H-1HZ4	110 (4.33)	80 (3.15)	50 (1.97)	20 (0.79)	104 (4.09)	74 (2.91)	46.5 (1.83)	16.5 (0.65)	92 (3.62)	62 (2.44)	80 (3.15)
800H-2HZ4	130 (5.12)	80 (3.15)	50 (1.97)	35 (1.38)	120 (4.72)	70 (2.76)	46.5 (1.83)	31.5 (1.24)	112 (4.41)	62 (2.44)	100 (3.94)
800H-3HZ4	180 (7.09)	80 (3.15)	50 (1.97)	35 (1.38)	170 (6.69)	70 (2.76)	46.5 (1.83)	31.5 (1.24)	162 (6.38)	62 (2.44)	150 (5.91)
800H-4HZ4	250 (9.84)	80 (3.15)	50 (1.97)	35 (1.38)	240 (9.45)	70 (2.76)	46.5 (1.83)	31.5 (1.24)	232 (9.13)	62 (2.44)	220 (8.66)

**Typical Pilot Light Wiring Diagrams**

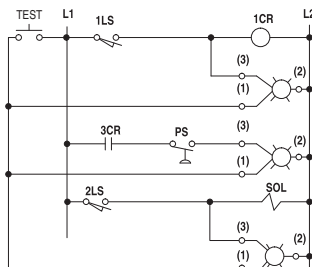
See applicable codes and laws



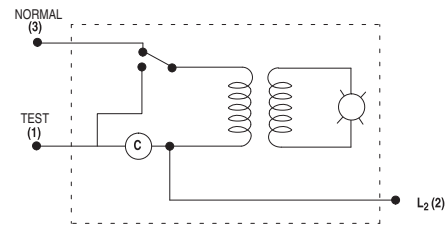
**Push-to-Test Pilot Light Device Schematic**



**Dual Input Diode Pilot Light Device Schematic**



**Dual Input Pilot Light Typical Application Wiring Diagram**



**Dual Input Pilot Light Transformer Type Device Schematic**