

ACCESSORIES

Handle



1494V-H2 (Painted)
1494V-W2 (Stainless)

Connecting Rod



(2)1494V-RB1 (short)
(2)1494V-RB2 (long)

Fuse Cover



1495-N61

Auxiliary Contacts



595-A (N.O.)
595-B (N.C.)
Also requires adapter
(595-N1)

Handle



1494V-H2 (Painted)
1494V-W2 (Stainless)

Connecting Rod



(2)1494V-RB1 (short)
(2)1494V-RB2 (long)

Fuse Cover



1495-N61

Auxiliary Contacts



595-A (N.O.)
595-B (N.C.)
Also requires adapter
(595-N1)

Handle



1494F-M2 (Painted)
1494F-S2 (Stainless)

Connecting Rod



(2)1494V-RB3 (short)
(2)1494V-RB4 (long)

Fuse Cover



1495-N68
(For switch with right
hand mechanism)
1495-N63
(For switch with left
hand mechanism)

Auxiliary Contacts



1495-N8 (N.O.)
1495-N9 (N.C.)
Right Hand Switch: No Adapter Kit
Left Hand Switch: Adapter Kit
1495-N25

Note: The Handle and Connecting Rod are compatible within each kit. They are not interchangeable.

ACCESSORIES

Handle



1494V-H2 (Painted)
1494V-W2 (Stainless)

Connecting Rod



(2)1494V-RB1 (short)
(2)1494V-RB2 (long)

Fuse Cover



1495-N61

Auxiliary Contacts



595-A (N.O.)
595-B (N.C.)
Also requires adapter
(595-N1)

Handle



1494V-H2 (Painted)
1494V-W2 (Stainless)

Connecting Rod



(2)1494V-RB1 (short)
(2)1494V-RB2 (long)

Fuse Cover



1495-N61

Auxiliary Contacts



595-A (N.O.)
595-B (N.C.)
Also requires adapter
(595-N1)

Handle



1494F-M2 (Painted)
1494F-S2 (Stainless)

Connecting Rod



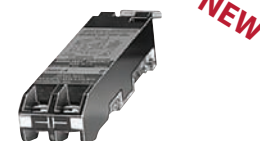
(2)1494V-RB3 (short)
(2)1494V-RB4 (long)

Fuse Cover



1495-N61

Auxiliary Contacts



595-A (N.O.)
595-B (N.C.)
Also requires adapter
(595-N1)

Note: The Handle and Connecting Rod are compatible within each kit. They are not interchangeable.