


## 30.5 mm Push Button Stations Hermetically Sealed for Division 2/Zone 2

## Product Overview

	<b>Bulletin 800R — 30.5 mm Push Button Stations Hermetically Sealed for Division 2/Zone 2</b> <ul style="list-style-type: none"> <li>• Hazardous location push button stations</li> <li>• Classes I and II Division 2/Zone 2</li> <li>• 30.5 mm mounting hole</li> <li>• Types 4/13 and 4/4X/13</li> </ul>	<b>Table of Contents</b> <p>Specifications..... this page</p> <p>Complete Assembled Stations.. 10-191</p> <p>Custom-Built Stations..... 10-192</p> <p>Enclosures Only ..... 10-192</p> <p>Approximate Dimensions..... 10-193</p>
---	--	--

## Specifications\*

Electrical Ratings		
Contact Ratings	Refer to the contact ratings (page 10-190).	
Dielectric Strength	2200V for one minute, 1300V for one minute (Logic Reed)	
Electrical Design Life Cycles	1 000 000 at maximum rated load, 200 000 at maximum rated load (Logic Reed)	
Mechanical Ratings		
Vibration	10...2000 Hz 1.52 mm displacement (peak-to-peak) Max./10 G Max. (except Logic Reed)	
Shock	1/2 cycle sine wave for 11 ms ≥25 G (contact fragility) and no damage at 100 G	
Degree of Protection	Type 4/4X/13, 4/13; Watertight/Corrosion-Resistant IEC 529 IP66/65	
Mechanical Design Life Cycles		
Push Buttons	(Momentary, Non-Illuminated) (Momentary, Illuminated) (Push-Pull/Twist-to-Release)	1 000 000 min. 250 000 min. 250 000 min.
Selector Switches	(Non-Illuminated) (Illuminated)	1 000 000 min. 200 000 min.
All other devices		200 000 min.
Contact Operation	Logic Reed and sealed switch contact blocks: single break magnetic	
Typical Operating Forces		
Operators without contact blocks	Flush, extended, standard mushroom, jumbo plastic mushroom: 2 lb max. Maintained selector switch: 3.6 in•lb maximum	
Spring Return Selector Switches	3.6 in•lb to stop 0.2 in•lb to return	
Illuminated Push Buttons and Push-to-Test Pilot Lights	5 lb maximum	
3-Position Push-Pull	8 lb maximum push to in position or pull to center position (15 lb maximum pull to out position)	
Push-Pull and Push-Pull/Twist	9 lb maximum push or pull 30 in•oz maximum twist, 6 in•oz minimum return	
Contact Blocks	Logic Reed Sealed Switch Stackable Sealed Switch	1 lb maximum 3 lb maximum at 0.205 in. plunger travel 1 lb maximum
Environment		
Temperature Range	Operating Storage	-40...+131 °F (-40...+55 °C) -40...+185 °F (-40...+85 °C)
<b>Note:</b> Operating temperatures below freezing are based on the absence of moisture and liquids. Consult your local Rockwell Automation sales office or Allen-Bradley distributor for use in lower temperature applications.		
Humidity	50% at 104 °F (40 °C)	

\* Performance Data — See page Important-3.

## 30.5 mm Push Button Stations Hermetically Sealed for Division 2/Zone 2

### Product Overview

#### Control Stations

Bulletin 800R control stations are designed for Division 2/Zone 2 hazardous locations. They consist of Bulletin 800H (Type 4/4X/13) or Bulletin 800T (Type 4/13) operators with sealed contact blocks. Bulletin 800R units are available as factory assembled stations or as components for field assembly.

#### Hazardous Locations

Since the contacts are enclosed in a hermetically sealed chamber, the contact block is suitable for use in Class I and II, Division 2/Zone 2 Groups A, B, C, D, F and G hazardous locations and is listed by Underwriters Laboratories for this class of service.

Complete stations as shown on page 2-23 can be used for Class I and II Division 2/Zone 2 applications. The individual components shown in the 800T and 800H sections are also suitable for Class I and II Division 2/Zone 2 locations providing they are suitably mounted by the customer in an enclosure as required for the application and by applicable codes and laws.

Per National Electrical Code: Zone 2. In Class I, Zone 2 locations, all wiring methods permitted for Class I, Division 2, Class I, Division 1 or Division 2, and Class I, Zone 0 or Zone 1 locations, including requirements for sealing, shall be permitted.

**Note:** Allen-Bradley Logic Reed contact blocks are also listed by Underwriters Laboratories for the Division 2/Zone 2 hazardous locations listed above.



#### CAUTION:

The complete stations and individual components listed herein **are not suitable for use in Class I and II Division 1 hazardous locations**. For Class I and II Division 1 hazardous locations, order Bulletin 800H Type 7 & 9 stations and units.

#### Sealed Switch Contact Ratings

Maximum continuous current  $I_{th}$  5 A. Bulletin 800T and 800H units have control circuit ratings with sealed switch contact blocks as follows:

Max. Operntl. Volts $U_e$	Utilization Category		Rated Operational Currents		
	IEC	NEMA	Volts $U_e$	Make	Break
AC 600	AC-15	B600	120...600 0...120	3600 VA 30 A	360 VA 3 A
DC 300	DC-13	P300	24...300 0...24	138 VA 5.0 A	

#### Stackable Sealed Switch Contact Ratings

Maximum continuous current  $I_{th}$  2.5 A. Bulletin 800T and 800H units have control circuit ratings with sealed switch contact blocks as follows:

Max. Operntl. Volts $U_e$	Utilization Category		Rated Operational Currents		
	IEC	NEMA	Volts $U_e$	Make	Break
AC 300	AC-15	C300	120...300 0...120	1800 VA 15 A	180 VA 1.5 A
DC 150	DC-13	Q150	24...150 0...24	69 VA 2.5 A	

#### Logic Reed Contact Ratings

Maximum DC: 30V, 0.06 A Maximum AC: 150V, 0.15 A  
Should only be used with resistive loads.

#### Standards Compliance

- UL 1604
- CSA C22.2, No. 213

#### Certifications

- UL Listed (File No. E10314, Guide No. NOIV)
- CSA Certified (File No. LR11924)

## 30.5 mm Push Button Stations Hermetically Sealed for Division 2/Zone 2

Product Selection

## Complete Assembled Stations

## Class I, Division 2/Zone 2

Push button operators for Class I, Division 2/Zone 2 are offered in Bulletin 800T/H, page 10-2.



Surface Mount  
Cat. No. 800R-1TA



Stainless Steel  
Booted Operator Station  
Cat. No. 800R-1HA4T





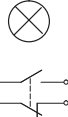
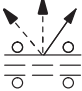

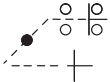
Stainless Steel  
Bootless Operator Station  
Cat. No. 800R-1HA4TL



Rosite  
Booted Operator Station  
Cat. No. 800R-1HA4R



Rosite  
Bootless Operator Station  
Cat. No. 800R-1HA4RL

Operator	Contact Symbol	Contact Action	Button Type	Button Color	Legend Marking	Cast Aluminum Enclosures*	Stainless Steel Enclosures*	Rosite Glass Polyester Enclosures*	
						Surface Mount	Bootless Operator Station†		
						Cat. No.	Cat. No.	Cat. No.	
One Push Button		1 N.O. - 1 N.C.	Momentary	Flush	Green	START	800R-1TB	800R-1HB4TL	800R-1HB4RL
				Extended	Red	STOP	800R-1TA	800R-1HA4TL	800R-1HA4RL
				Flush	Black	No Legend	800R-1TX	800R-1HX4TL	800R-1HX4RL
Two Push Buttons		1 N.O. - 1 N.C. Each Button	Momentary	Flush Extended	Green Red	START STOP	800R-2TA	800R-2HA4TL	800R-2HA4RL
				Flush Flush	Black Black	No Legend No Legend	800R-2TX	800R-2HX4TL	800R-2HX4RL
One Pilot Light, Two Push Buttons		1 N.O. - 1 N.C. Each Button	Momentary	120V AC Flush Extended	Red Green Red	No Legend START STOP	800R-2TAR	800R-2HAR4TL	800R-2HAR4RL
				120V AC Flush Flush	Red Black Black	No Legend No Legend No Legend	800R-2TXR	800R-2HXR4TL	800R-2HXR4RL
3-Position Selector Switch		1 N.O. - 1 N.C.	Maintained	Knob Lever	Black with white insert	HAND OFF AUTO	800R-R3TA	800R-R3HA4TL	<b>800R-R3HA4RL</b>
				Knob Lever	Black with white insert	No Legend	800R-R3TX	800R-R3HX4TL	800R-R3HX4RL
One Push Button		1 N.O. - 1 N.C.	Maintained	Push-Pull/Twist	Red	EMRG.STOP	<b>800R-1TAM</b>	800R-1HAM4TL	800R-1HAM4RL
Two Push Buttons		1 N.O. - 1 N.C. Each Button	Maintained	Flush Extended	Green Red	START STOP	800R-2TAM	800R-2HAM4TL	800R-2HAM4RL
				Flush Flush	Black Black	No Legend No Legend	800R-2TXM	800R-2HXM4TL	800R-2HXM4RL

\* Type 4/13.

\* Type 4/4X/13.

† To order a control station with booted operators, remove the **L** from the end of the catalog number.

Example: Cat. No. 800R-1HA4TL becomes Cat. No. 800R-1HA4T.

Custom-Built Stations



**Description**  
The tables on page 10-191 list the most commonly used push button stations. Stations not listed in the table may be ordered as custom-built stations.

**Cat. No.**  
The cat. no. used to identify custom-built Bulletin 800R push button stations, which are built at the factory, will be cat. nos. listed for the enclosure only, except letter **W** will be substituted for the letter **Z** and with a station serial number.

**Ordering Information**  
The following information is required when ordering custom built push button stations.

1. Cat. no. of enclosure.
2. Cat. no. of control units.
3. Legend plate cat. no. and/or marking for each unit.
4. Specify vertical or horizontal mounting.
5. Specify desired operator mounting sequence. Inclusion of a sketch is recommended. If no information is given, standard configuration will be used.

Enclosures Only



Die Cast  
Cat. No. 800R-2TZ



Stainless Steel  
Cat. No. 800R-2HZ4



Rosite Glass Polyester  
Cat. No. 800R-2HZ4R

Units*	Die Cast (Type 4/13)	Stainless Steel (Type 4/4X/13)	Rosite Glass Polyester (Type 4/4X/13)
	Cat. No.	Cat. No.	Cat. No.
1	800R-1TZ	800R-1HZ4	800R-1HZ4R
2	800R-2TZ	800R-2HZ4	800R-2HZ4R
3	800R-3TZ	800R-3HZ4	800R-3HZ4R
4	800R-4TZ	800R-4HZ4	800R-4HZ4R
5	—	800R-5HZ4	—
6	800R-6TZ	800R-6HZ4	800R-6HZ4R

\* Number of units that can be mounted in enclosure.

\* Extra deep. Accomodates two levels of stackable sealed switch contact blocks.

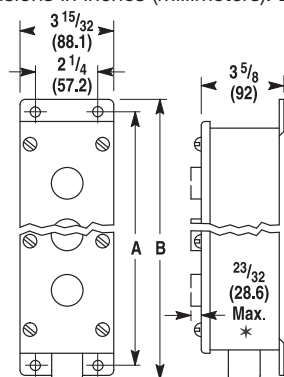
**Note:** Enclosure and conduit dimensions are detailed on page 10-193, except for the fiberglass enclosures, which are found on 10-64.

# 30.5 mm Push Button Stations Hermetically Sealed for Division 2/Zone 2

## Product Overview

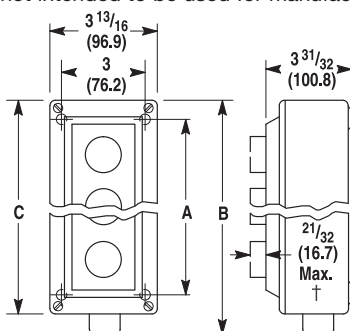
### Approximate Dimensions and Shipping Weights

Dimensions in inches (millimeters). Dimensions are not intended to be used for manufacturing purposes.



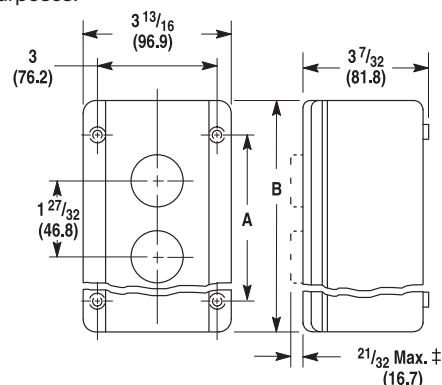
**Type 4/4X/13**  
**Stainless Steel**

**Watertight/Oiltight/Corrosion-Resistant Enclosure**



**Type 4/4X/13**  
**Rosite Glass Polyester**

**Watertight/Oiltight/Corrosion-Resistant Enclosure**



**Type 4/13**  
**Cast Aluminum Enclosure**  
**Watertight/Oiltight**

Dimension	Number of Units					
	1	2	3	4	5	6
Stainless Steel Type 4/4X/13						
A	5-5/32 (135)	7 (178)	8-27/32 (225)	10-11/16 (271)	12-17/32 (318)	14-3/8 (360)
B	6-13/32 (163)	8-1/4 (210)	10-1/8 (257)	11-31/32 (304)	14-1/32 (359)	15-7/8 (403)
Pipe Tap Size	3/4				1	
Glass Polyester Type 4/4X/13						
A	4-1/2 (114)	4-1/2 (114)	6-1/4 (159)	8 (203)	12-1/8 (308)	12-1/8 (308)
B	7-1/32 (181)	7-1/32 (181)	8-23/32 (221)	10-21/32 (271)	14-7/8 (378)	14-7/8 (378)
C	5-7/8 (149)	5-7/8 (149)	7-9/16 (192)	9-1/2 (241)	13-1/2 (343)	13-1/2 (343)
Pipe Tap Size	3/4				1	
Cast Aluminum Type 4/13						
A	2-3/4 (69.8)	4-1/2 (114)	6-1/4 (159)	8 (203)	—	12-1/8 (308)
B	4-3/16 (106)	5-7/8 (149)	7-9/16 (192)	9-1/2 (241)	—	13-1/2 (343)
Conduit Opening	3/4 in. 14 N.P.T.				—	1 in. 11-1/2 N.P.T.

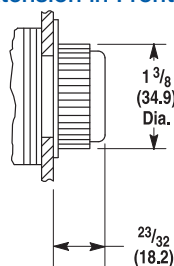
\* Selector switch is 1-5/32 (29.4) maximum; pilot light is 1-7/32 (31).

\* Selector switch is 1-3/32 (27.8) maximum; pilot light is 1-5/32 (29.4) maximum.

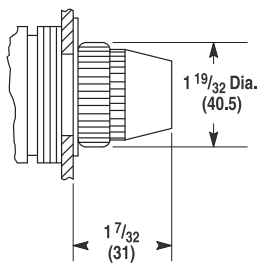
‡ Selector switch is 1-7/32 (30.9) maximum; pilot light is 1-9/32 (32.5).

§ Minimum vertical spacing dimension for jumbo legend plate is 2-15/32 (62.7).

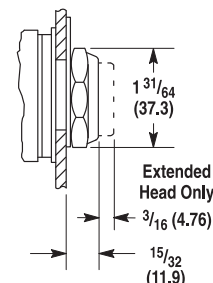
### Operator Extension in Front of Panel\*



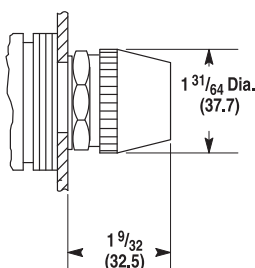
**Type 4/4X/13**  
**Booted Flush and Extended Head Push Button**



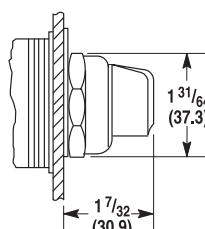
**Type 4/4X/13**  
**Pilot Light**



**Type 4/13 and Type 4/4X/13**  
**Bootless Flush and Extended Head Push Button**



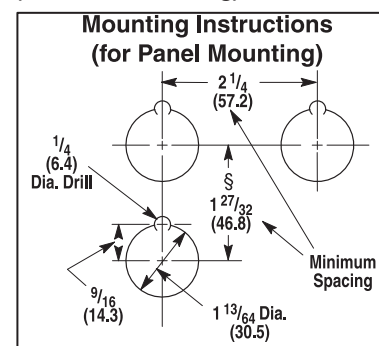
**Type 4/13**  
**Pilot Light**



**Type 4/13 and Type 4/4X/13**  
**Standard Knob Selector Switches**

\* See 10-49...10-56 for additional Type 4/13 outlines and for additional Type 4/4X/13 outlines.

### Mounting Instructions (for Panel Mounting)



**Allen-Bradley**

www.ab.com/catalogs Preferred availability cat. nos. are **bold**.

Publication A117-CA001A-EN-P