

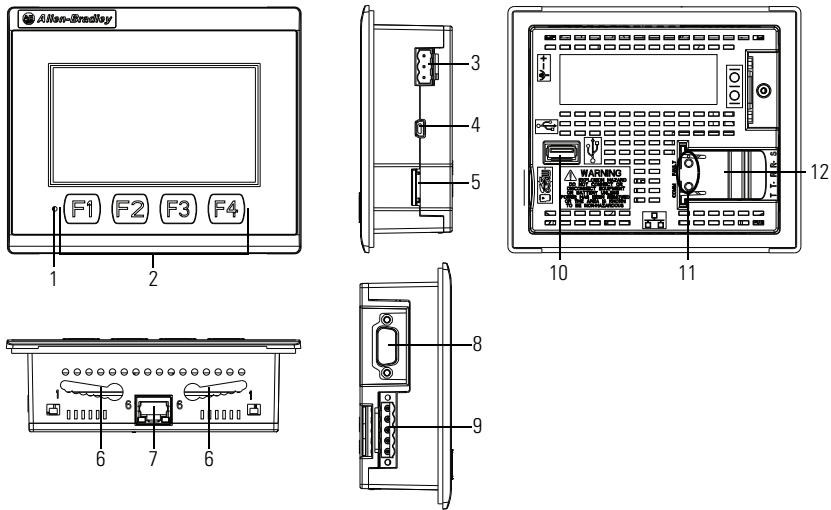
Catalog Number Explanation

Catalog No.	Operator Input	Size	Display Type
2711R-T4T	Touch screen and function keys	4 in.	Color TFT
2711R-T7T	Touch screen	7 in.	
2711R-T10T	Touch screen	10 in.	

About the Terminals

PanelView 800 terminals are operator interface devices for monitoring and controlling devices attached to a controller. HMI applications are created using Connected Components Workbench software, then downloaded to the terminal.

PanelView 800 Terminal – 2711R-T4T

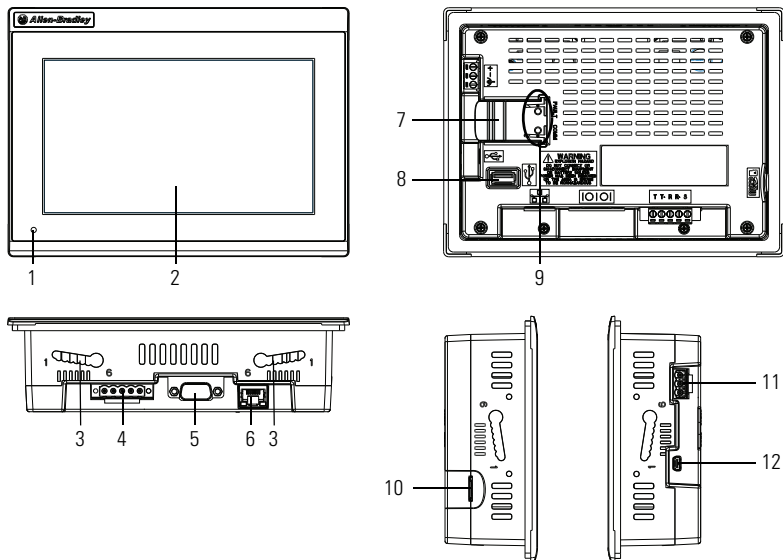


Item	Description	Item	Description
1	Power status LED ⁽¹⁾	7	10/100 Mbit Ethernet port
2	Touch display, function keys	8	RS-232 port
3	24V DC power input	9	RS-422 and RS-485 port
4	USB device port ⁽²⁾	10	USB host port
5	Micro-SD (Secure Digital) card slot	11	Diagnostic status indicator
6	Mounting slots	12	Replaceable real-time clock battery

⁽¹⁾ The Power Status LED is red when in screen saver or dimmer mode and green when in normal (operational) mode.

⁽²⁾ The USB device port is not intended for Customer use.

PanelView 800 Terminal – 2711R-T7T



Item	Description	Item	Description
1	Power status LED ⁽¹⁾	7	Replaceable real-time clock battery
2	Touch display	8	USB host port
3	Mounting slots	9	Diagnostic status indicator
4	RS-422 and RS-485 port	10	Micro-SD (Secure Digital) card slot
5	RS-232 port	11	24V DC power input
6	10/100 Mbit Ethernet port	12	USB device port ⁽²⁾

⁽¹⁾ The Power Status LED is red when in screen saver or dimmer mode and green when in normal (operational) mode.

⁽²⁾ The USB device port is not intended for Customer use.