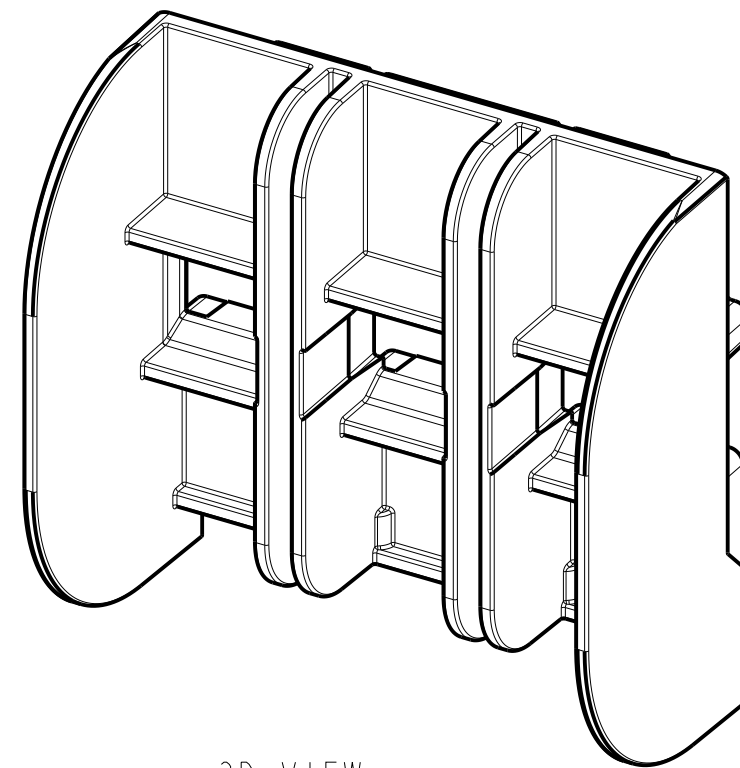
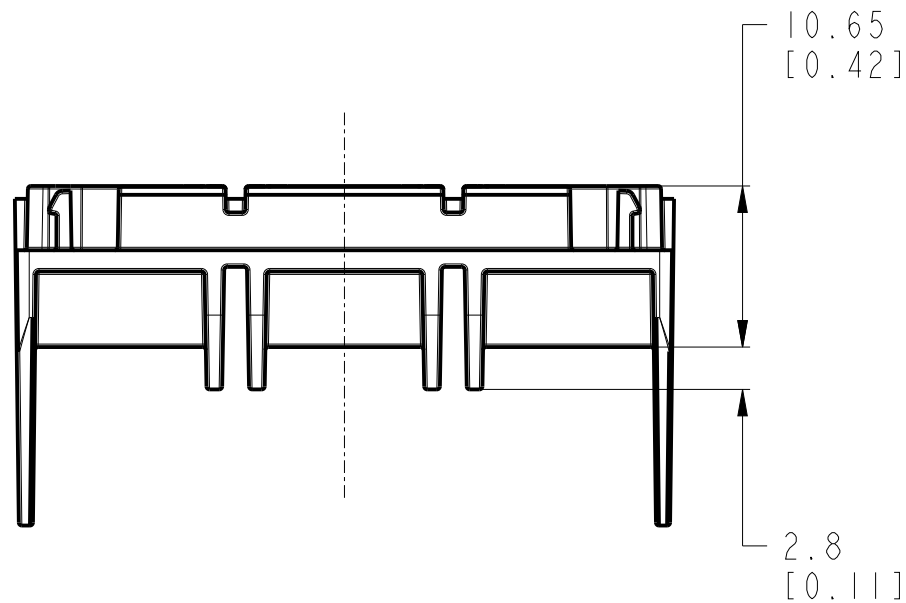
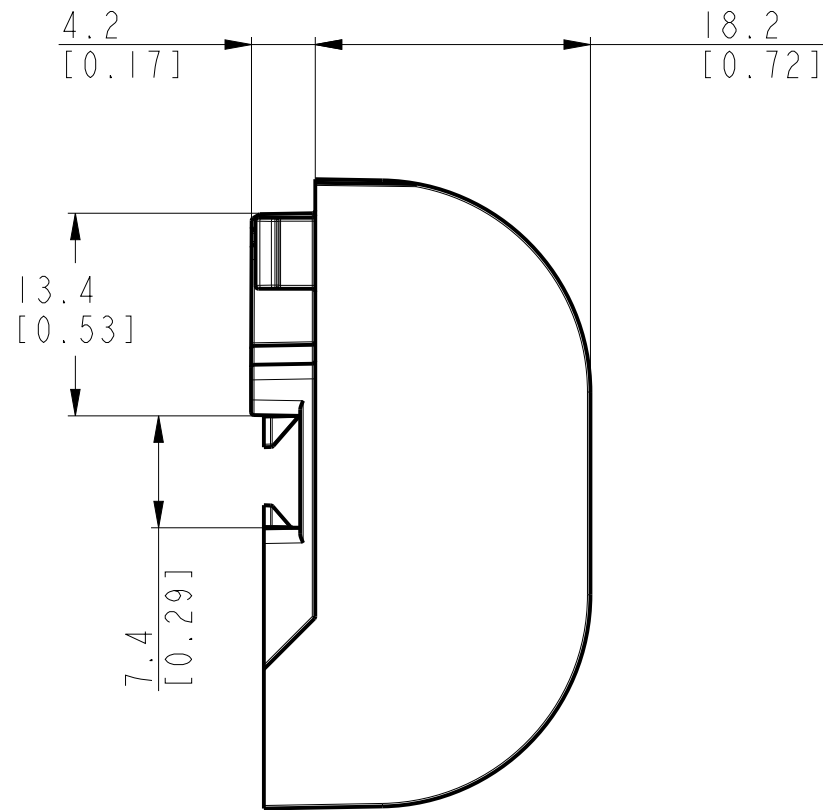
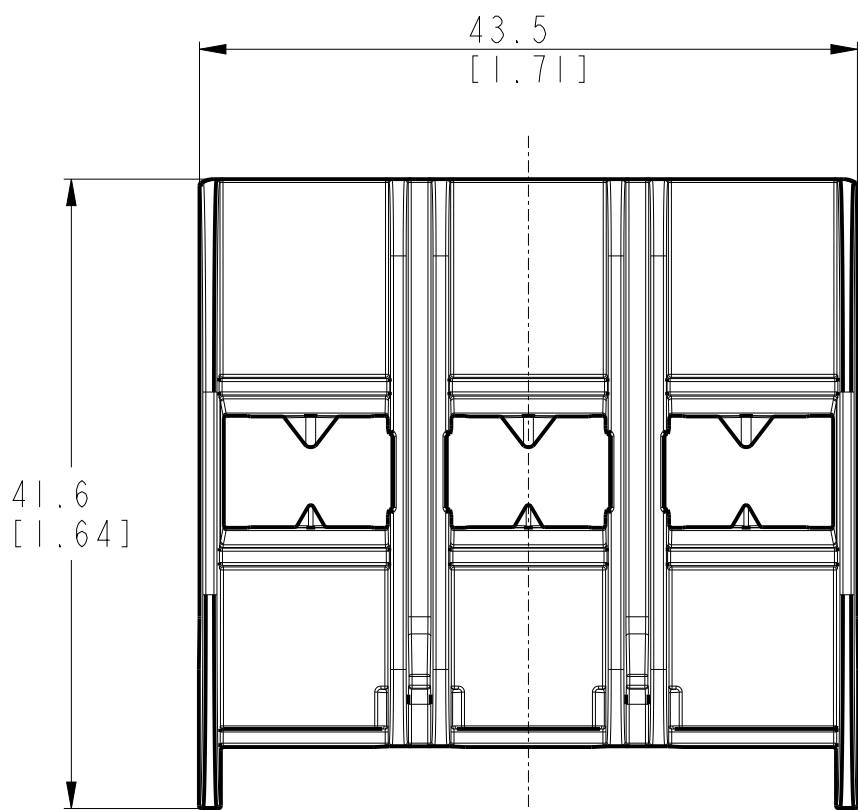



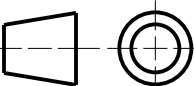
CRITICAL TO QUALITY CLASSIFICATION TABLE				
P=PERFORMANCE, F=FIT, A=ASSEMBLY X=IDENTIFIES APPLICABLE CLASSIFICATION(S) ◇=ENGINEERING AND/OR MANUFACTURING REQUIREMENT Ⓢ=REGULATORY REQUIREMENT-CONFORMANCE IS MANDATORY				
COMMENTS	DRAWING ZONE	P	F	A
ROHS	GI-HI			X



3D VIEW

-Dimensions are shown in mm [inches]
-Dimensions are not intended to be used
for manufacturing purposes

MUST COMPLY WITH ROCKWELL
AUTOMATION ENVIRONMENTAL
SPECIFICATION 970-20-01

				10005925264		PN-514241							
WORKMANSHIP STANDARDS		FINISH		MATERIAL		MODEL/DIR NO.		PART/MMR NUMBER					
ALL UNDIMENSIONED GEOMETRIES ARE CONTROLLED BY THE CAD MODEL. IN CASE OF DIMENSION DISCREPANCY, CAD MODEL OVERRIDES.		<div><div></div><div><div>Rockwell</div><div>Automation</div></div></div>				CONFIDENTIAL AND PROPRIETARY INFORMATION. THIS DOCUMENT CONTAINS CONFIDENTIAL AND PROPRIETARY INFORMATION OF ROCKWELL AUTOMATION, INC. AND MAY NOT BE USED, COPIED OR DISCLOSED TO OTHERS, EXCEPT WITH THE AUTHORIZED WRITTEN PERMISSION OF ROCKWELL AUTOMATION, INC.							
FIRST ANGLE PROJECTION		DESCRIPTION140MT-C-TE				DATE: 2020-12-22		SHEET 1 OF 1					
						SIZE		DIR		VER			
		CREATED BY: RPAMPAT				CHANGED BY: -		A3		10005925283		00	