

	1492-JKD4TW			1492-JKD4Q			1492-H7		
Dimensions are not intended to be used for manufacturing purposes. Note: Height dimension is measured from top of rail to top of terminal block.									
Specifications	<i>Feed-through terminal block with knife disconnect; 3 connection points, 2 on one side</i>			<i>Feed-through terminal block with knife disconnect; 2 connection points on each side</i>			<i>Handle-style isolating terminal block</i>		
Certifications		CSA	IEC		CSA	IEC		CSA	IEC
Voltage Rating	600V AC/DC		500V AC/DC	600V AC/DC		500V AC/DC	300V AC/DC	300V AC/DC	500V AC/DC
Maximum Current	25 A		30 A	25 A		30 A	15 A	15 A	15 A
Wire Range (Rated Cross Section)	#30...10 AWG		0.5...4 mm ²	#30...10 AWG		0.5...4 mm ²	#30...10 AWG		0.5...4.0 mm ²
Fuse Size (Dummy Fuse Supplied)	—			—			1/4 x 1-1/4 in.		
Wire Strip Length	0.39 in. (10 mm)			0.39 in. (10 mm)			0.38 in. (9.7 mm)		
Recommended Tightening Torque	6.2 lb•in (0.7 N•m)			6.2 lb•in (0.7 N•m)			7.1 lb•in (0.8 N•m)		
Density	49 pcs/ft (163 pcs/m)			49 pcs/ft (163 pcs/m)			33 pcs/ft (109 pcs/m)		
Housing Temperature Range	-58...+248 °F (-50...+120 °C)			-58...+248 °F (-50...+120 °C)			-40...+221 °F (-40...+105 °C)		
Short-Circuit Current Rating	See page 12-42								
Terminal Blocks	Cat. No.	Pkg Qty.	Cat. No.	Pkg Qty.	Cat. No.	Pkg Qty.			
Color:	Grey	1492-JKD4TW	50	1492-JKD4Q	50	—			
With Test Points	Grey	1492-JKD4TWTP	50	1492-JKD4QTP	50	—			
	Black	—	—	—	—	1492-H7			
						25			
Accessories	Cat. No.	Pkg Qty.	Cat. No.	Pkg Qty.	Cat. No.	Pkg Qty.			
Mounting Rails:									
3 ft Scored A-B Rail	—	—	—	—	1492-N1	20			
3 ft Rigid A-B Rail	—	—	—	—	1492-N22	20			
3 ft Rigid Rise A-B Rail	—	—	—	—	1492-N44	2			
Standoff Brackets (use every 12 in.) *	—	—	—	—	1492-N25	2			
1 m Symmetrical DIN (Steel)	199-DR1	10	199-DR1	10	199-DR1	10			
1 m Symmetrical DIN (Aluminum)	1492-DR5	10	1492-DR5	10	1492-DR5	10			
1 m Hi-Rise Sym. DIN (Aluminum)	1492-DR6	2	1492-DR6	2	1492-DR6	2			
1 m Angled Hi-Rise Sym. DIN (Steel)	1492-DR7	2	1492-DR7	2	1492-DR7	2			
End Barrier	Grey	1492-EBJ4TW	50	1492-EBJ4Q	50	1492-N37			
	Yellow	1492-EBJ4TW-Y	50	1492-EBJ4Q-Y	50	—			
End Anchors and Retainers:									
A-B Rail — Heavy Duty	—	—	—	—	1492-N23	10			
A-B Rail — Normal Duty	—	—	—	—	1492-N47	50			
Screwless End Retainer	1492-ERL35	20	1492-ERL35	20	1492-ERL35	20			
DIN Rail - Normal Duty	1492-EAJ35	100	1492-EAJ35	100	1492-EAJ35	100			
DIN Rail - Heavy Duty	1492-EAHJ35	50	1492-EAHJ35	50	1492-EAHJ35	50			
Jumpers:									
Plug-in Center Jumper — 41-pole	1492-CJLJ6-41	10	1492-CJLJ6-41	10	—	—			
Plug-in Center Jumper — 10-pole	1492-CJLJ6-10	20	1492-CJLJ6-10	20	—	—			
Plug-in Center Jumper — 4-pole	1492-CJLJ6-4	60	1492-CJLJ6-4	60	—	—			
Plug-in Center Jumper — 3-pole	1492-CJLJ6-3	60	1492-CJLJ6-3	60	—	—			
Plug-in Center Jumper — 2-pole	1492-CJLJ6-2	60	1492-CJLJ6-2	60	—	—			
Uninsulated Side Jumper — 10-Pole	—	—	—	—	1492-N49	10			
Side Jumper — Insulating Sleeve	—	—	—	—	1492-SJS	10			
Other Accessories:									
Partition Plate	—	—	—	—	—	—			
Marking Systems:									
Snap-in marker cards	1492-MR6X12 (120/card)	5	1492-MR6X12 (120/card)	5	1492-MS8X12 (56/card)	5			
Snap-in marker cards	1492-M6X12 (120/card)	5	1492-M6X12 (120/card)	5	1492-MS8X9 (56/card)	5			
Adhesive Labels	—	—	—	—	1492-ALHFB (50/sheet)	1			

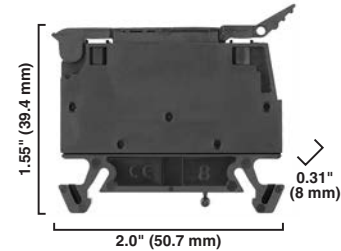
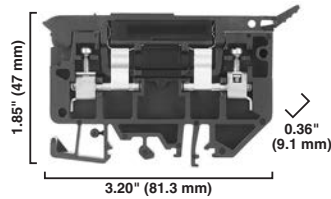
* For use with 1492-N22 DIN rail only.

1492-H...

1492-WFB4...

Dimensions are not intended to be used for manufacturing purposes.

Note: Height dimension is measured from top of rail to top of terminal block.

**Specifications**

Single-circuit fusible terminal block with or without fuse indication.

Single-circuit fuse block with or without fuse indication.

Certifications	UL		CSA	IEC	UL		CSA	IEC
	300V AC/DC		300V AC/DC	500V AC/DC	300V AC/DC		300V AC/DC	500V AC/DC
Voltage Rating	H6/WFB4		10...57V AC/DC		10...57V AC/DC			
	H5/WFB424		100...300V AC		85...264V AC			
	H4/WFB4250							
Maximum Current	15 A			15 A		15 A *		
Wire Range (Rated Cross Section)	#30...12 AWG		0.5...4 mm ²		#30...12 AWG		0.5...4 mm ²	
Wire Strip Length	0.38 in. (9.7 mm)			0.31 in. (8 mm)				
Recommended Tightening Torque	7.1 lb•in (0.8 N•m)			2.65...5.3 lb•in (0.3...0.6 N•m)				
Density	33 pcs/ft (109pcs /m)			38 pcs/ft (125 pcs/m)				
Housing Temperature Range	-40...+195 °F (-40...+90 °C)			-40...+195 °F (-40...+90 °C)				
Indicator Type								
H6/WFB4	Non-Indicating			Non-Indicating				
H5/WFB424	Red LED			Red LED				
H4/WFB4250	Neon			Neon				
Leakage Current								
H6/WFB4	—			—				
H5/WFB424	2 mA @ 24V			2 mA @ 24V				
H4/WFB4250	2 mA @ 300V			2 mA @ 300V				
Fuse Size (Not Supplied)	1/4 x 1-1/4 in.			5 x 20 mm				
Short-Circuit Current Rating	See page 12-42							

Terminal Blocks	Cat. No.	Pkg Qty.	Cat. No.	Pkg Qty.	
Color:	Black No-indication	1492-H6	25	1492-WFB4	50
	Black w/LED	1492-H5	25	1492-WFB424	50
	Black w/Neon	1492-H4	25	1492-WFB4250	50
Accessories	Cat. No.	Pkg Qty.	Cat. No.	Pkg Qty.	
Mounting Rails:					
1 m Symmetrical DIN (Steel)	199-DR1	10	199-DR1	10	
1 m Symmetrical DIN (Aluminum)	1492-DR5	10	1492-DR5	10	
1 m Hi-Rise Sym. DIN (Aluminum)	1492-DR6	2	1492-DR6	2	
1 m Angled Hi-Rise Sym. DIN (Steel)	1492-DR7	2	1492-DR7	2	
3 ft Scored A-B Rail	1492-N1	20	—	—	
3 ft Rigid A-B Rail	1492-N22	20	—	—	
3 ft High Rise A-B Rail	1492-N44	2	—	—	
Standoff Brackets (Use Every 12 in.)	1492-N25	2	—	—	
End Barrier	1492-N37	50	Not Required	—	
End Anchors and Retainers:					
Screwless End Retainer	1492-ERL35	20	1492-ERL35	20	
DIN Rail — Normal Duty	1492-EAJ35	100	1492-EAJ35	100	
DIN Rail — Heavy Duty	1492-EAHJ35	50	1492-EAHJ35	50	
A-B Rail — Heavy Duty	1492-N23	10	—	—	
10-Pole Side Jumper *	1492-N49	10	1492-SJFB8-10	10	
Side Jumper Insulating Sleeve	1492-SJS	10	—	—	
Other Accessories:					
Partition Plate	—	—	1492-PPSL3	50	
Marking Systems:					
Snap-In Marker Card — For Base Block	—	5	1492-MS8X12 (56/card)	5	
	—	5	1492-MS8X9 (56/card)	5	
For Handle	1492-MS8X12 (56/card)	5	1492-MS8X9 (56/card)	5	
	1492-MS8X9 (56/card)	5			
Adhesive Labels	1492-ALHFB (50/sheet)	1	1492-ALHFB (50/card)	1	

* IEC standards for 5 x 20 mm fuses do not include ratings above 6.3 A.

* Cat. No. 1492-N49 is uninsulated. Cat. No. 1492-SJFB8-10 is insulated.

IEC Terminal Block Accessories

Jumpers

Side Jumpers

For Use With	Pkg Qty.	Cat. No.
1492-WM4, W4	50	1492-N42
1492-H4, H5, H6, H7	10	1492-N49
	10	* 1492-SJS
1492-W3, WR3	10	1492-SJ5-10
1492-JD3, JD3C, JD3F, JDG3, JD3DF, JD3DR, JD3SS, JDG3P	50	1492-SJ5A-10
1492-JD3, JD3C, JD3F, JDG3, JD3DF, JD3DR, JD3SS, JDG3P	50	1492-SJ5A-24
1492-JD3, JD3C, JD3F, JDG3, JD3DF, JD3DR, JD3SS, JDG3P	50	1492-SJ5B-24
1492-JD3, JD3C, JD3F, JDG3, JD3DF, JD3DR, JD3SS, JDG3P	50	1492-SJ5B-10
1492-WM4, W4, W4TW	10	⊛ 1492-SJ6-10
1492-JT3M	5	1492-SJ6A-50
1492-W10	10	1492-SJ8-10
1492-JD3FB, JDG3FB	50	1492-SJ8A-4
1492-JD3FB, JDG3FB	50	1492-SJ8A-3
1492-JD3FB, JDG3FB	50	1492-SJ8A-2
1492-LMP3, LMP3Q, LMJ3, LM3, LM3Q, LMP3E, LMP3QE	50	1492-SJLM5-2
1492-WMD1	10	‡ 1492-SJMD5-12
1492-WFB4, WFB424, WFB4250	10	1492-SJFB8-10
1492-WM3	10	1492-SJM5-10
1492-WTF3, WTS3, WTF3LP, WTS3LP, WTF3LN, WTS3LN	10	1492-SJT5-20-R
1492-WTF3, WTS3, WTF3LP, WTS3LP, WTF3LN, WTS3LN	10	1492-SJT5-20-B

Note: Side jumpers carry the same current rating as the terminal block used with it

* Side jumper insulating sleeve only for use with Cat. No. 1492-N49

⊛ Use jumper on single side of terminal block only

‡ Uninsulated

Two-Level Jumper

For Use With	Pkg Qty.	Cat. No.
1492-LTF3 (Connects Two Levels within a 1492-LTF3 Terminal Block)	20	1492-CJL5D

	1492-HC6	1492-HJ86	1492-HJ812			
Dimensions are not intended to be used for manufacturing purposes.						
Specifications	High-density 6-pole panel mount terminal block. Can be interconnected to make 12- and 18-pole units.	Standard 6-pole panel mount block. Screw terminal with wire clamp.	Standard 12-pole panel mount block. Screw terminal with wire clamp.			
Certifications						
Voltage Rating	600V AC/DC	600V AC/DC	600V AC/DC			
Maximum Current (per pole)	25 A	25 A	25 A			
Wire Range (Rated Cross Section)	#30...#12 AWG (0.05...4 mm ²)	#16...#12 AWG (1.5...4 mm ²)	#16...#12 AWG (1.5...4 mm ²)			
Wire Strip Length	0.38 in. (9.7 mm)	0.38 in. (9.7 mm)	0.38 in. (9.7 mm)			
Recommended Tightening Torque	3...7 lb•in (0.3...0.8 N•m)	8...16 lb•in (0.9...1.8 N•m)	8...16 lb•in (0.9...1.8 N•m)			
Insulation Temperature Range	-40...+221 °F (-40...+105 °C)	-40...+221 °F (-40...+105 °C)	-40...+221 °F (-40...+105 °C)			
Terminal Blocks	Cat. No.	Pkg Qty.	Cat. No.	Pkg Qty.	Cat. No.	Pkg Qty.
Terminal Block	1492-HC6	1	1492-HJ86	1	1492-HJ812	1
Accessories (page 12-109)	Cat. No.	Pkg Qty.	Cat. No.	Pkg Qty.	Cat. No.	Pkg Qty.
Jumpers: 2-Pole Uninsulated	1492-N38	50	1492-N38	50	1492-N38	50
50-pole Uninsulated	1492-N39	10	—	—	—	—
Insulating Sleeve	1492-SJS	10	—	—	—	—
Anchor Unit: (required every 12th block)	Not Required	—	Not Required	—	Not Required	—
End Piece	Not Required	—	Not Required	—	Not Required	—

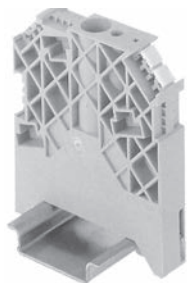
* #8-32 screw.
 * Measurement between mounting screw centers.
 ‡ Mounting screws are offset 0.31 in. (7.9 mm) from centerline.
 § Mounting screws are offset 0.19 in. (4.76 mm) from centerline.

	1492-15T	1492-25T		
Dimensions are not intended to be used for manufacturing purposes.				
Specifications	High temperature 1-pole panel mount block, wire clamp. Gangable for multi-pole installation.	High temperature 1-pole panel mount block, wire clamp. Gangable for multi-pole installation.		
Voltage Rating	600V AC/DC	600V AC/DC		
Maximum Current (per pole)	35 A	45 A		
Wire Range (Rated Cross Section)	#16...#12 AWG (1.5...4 mm ²)	#16...#10 AWG (1.5...6 mm ²)		
Wire Strip Length	0.38 in. (9.7 mm)	0.38 in. (9.7 mm)		
Recommended Tightening Torque	10...16 lb•in (1.1...1.8 N•m)	10...16 lb•in (1.1...1.8 N•m)		
Insulation Temperature Range	-40...+300 °F (-40...+149 °C)	-40...+300 °F (-40...+149 °C)		
Terminal Blocks	Cat. No.	Pkg Qty.	Cat. No.	Pkg Qty.
Terminal Block	1492-15T	100	1492-25T	100
Accessories (page 12-109)	Cat. No.	Pkg Qty.	Cat. No.	Pkg Qty.
Anchor Unit: (required every 12th block)	1492-25A	10	1492-25A	10
End Piece	1492-15E	25	1492-25E	25

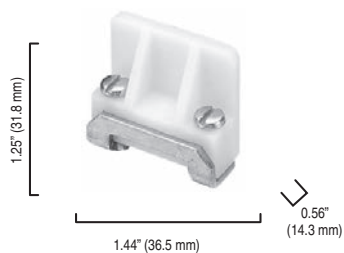
NEMA Terminal Block Accessories

End Anchors

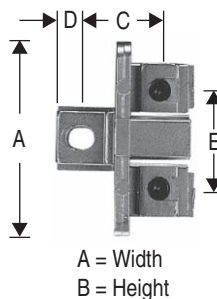
1492-EAHJ35



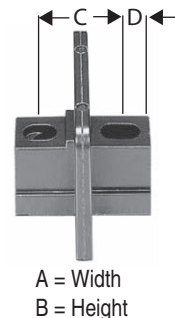
1492-N23



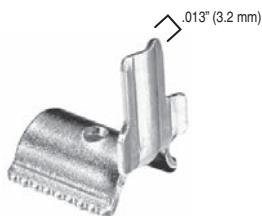
1492-15A, 1492-25A



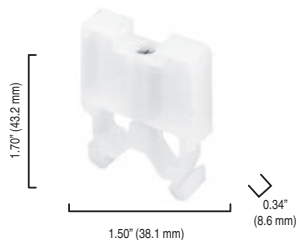
1492-15E, 1492-25E



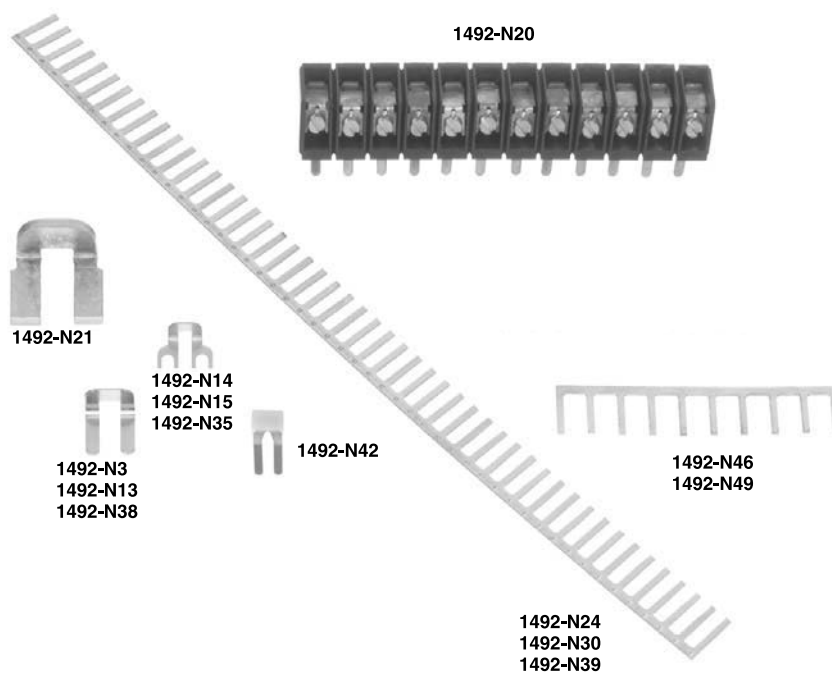
1492-N2



1492-N47



Cat. No.	A	B	C	D	E
1492-15A	1.5 in. (38.1 mm)	1.03 in. (26.2 mm)	0.594 in. (15.1 mm)	0.234 in. (5.9 mm)	0.75 in. (19.1 mm)
1492-15E	1.5 in. (38.1 mm)	1.03 in. (26.2 mm)	0.594 in. (15.1 mm)	0.234 in. (5.9 mm)	—
1492-25A	1.88 in. (47.8 mm)	1.19 in. (30.2 mm)	0.688 in. (17.5 mm)	0.203 in. (5.2 mm)	0.97 in. (24.6 mm)
1492-25E	1.88 in. (47.8 mm)	1.19 in. (30.2 mm)	0.688 in. (17.5 mm)	0.234 in. (5.9 mm)	—



* The 1492-SJS Insulating Sleeve reduces exposure to live parts on the 1492-N39 and 1492-N49. The 1492-SJS used with the 1492-N39 and 1492-H1 or 1492-HM1 provides IEC 947 IP2X finger protection.