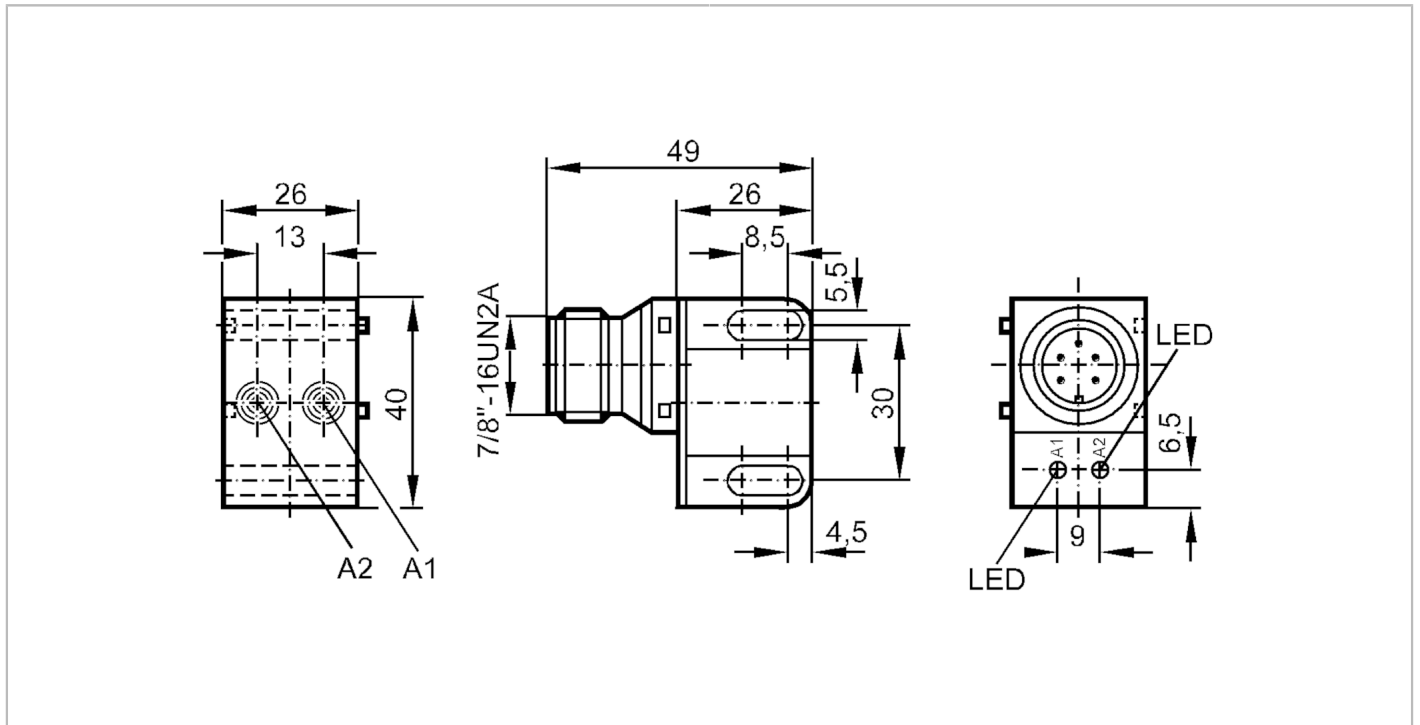


IN0117



Dual inductive sensor for valve actuators

IND2004DAROA/SL/LS-500 RT



Product characteristics

Output function		2 x normally open
Sensing range	[mm]	4
Housing		rectangular
Dimensions	[mm]	40 x 26 x 26

Electrical data

Frequency AC	[Hz]	47...63
Operating voltage	[V]	20...140 AC / 10...140 DC
Protection class		I
Reverse polarity protection		no

IN0117



Dual inductive sensor for valve actuators

IND2004DAROA/SL/LS-500 RT

Outputs	
Output function	2 x normally open
Max. voltage drop switching output DC [V]	5
Max. voltage drop switching output AC [V]	5
Minimum load current [mA]	5
Max. leakage current [mA]	0.8
Permanent current rating of switching output AC [mA]	200
Permanent current rating of switching output DC [mA]	200
Short-time current rating of switching output [mA]	900; (20 ms / 0,5 Hz)
Switching frequency AC [Hz]	25
Switching frequency DC [Hz]	25
Short-circuit proof	no
Overload protection	no
Monitoring range	
Sensing range [mm]	4
Real sensing range Sr [mm]	4 ± 10 %
Operating distance [mm]	0...3.25
Accuracy / deviations	
Correction factor	steel: 1 / stainless steel: 0.7 / brass: 0.4 / aluminum: 0.3 / copper: 0.2
Hysteresis [% of Sr]	3...15
Switch-point drift [% of Sr]	-10...10
Operating conditions	
Ambient temperature [°C]	-25...80
Protection	IP 67
Tests / approvals	
EMC	EN 60947-5-2 EN 55011 class B
MTTF [years]	502
Mechanical data	
Weight [g]	78.5
Housing	rectangular
Mounting	non-flush mountable
Dimensions [mm]	40 x 26 x 26
Material	stainless steel (1.4305 / 303); PBT
Displays / operating elements	
Display	Switching status 2 x LED, red
Electrical connection	
Required protection	miniature fuse to IEC60127-2 sheet 1; ≤ 2 A; fast acting; Place the fuse outside the hazardous area.

IN0117



Dual inductive sensor for valve actuators

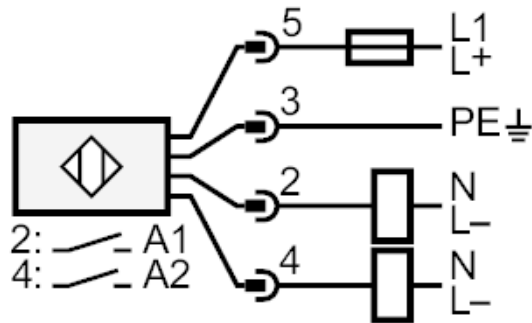
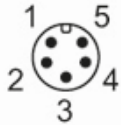
IND2004DAROA/SL/LS-500 RT

Remarks

Remarks	Recommendation: check the unit for reliable function after a short circuit.
Pack quantity	1 pcs.

Electrical connection - plug

Connector: 1 x 7/8"



Note miniature fuse to IEC60127-2 sheet 1 ≤ 2 A fast acting
Place the fuse outside the hazardous area.