

IEC Push Buttons - 800F



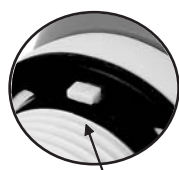
22 mm 800F Push Buttons

Description	Part Number METAL*	Part Number PLASTIC*
Momentary Push Button Operator, Non-illuminated, Flush, Black	800FM-F2	800FP-F2
Momentary Push Button Operator, Non-illuminated, Flush, Green	800FM-F3	800FP-F3
Momentary Push Button Operator, Non-illuminated, Extended, Red	800FM-E4	800FP-E4
2-Position Selector Switch Operator, Non-illuminated, maintained	800FM-SM22	800FP-SM22
3-Position Selector Switch Operator, Non-illuminated, maintained	800FM-SM32	800FP-SM32
3-Position Selector Switch Operator, Non-illuminated, Spring return from both sides	800FM-SB32	800FP-SB32
Green Pilot Light Operator	800FM-P3	800FP-P3
Red Pilot Light Operator	800FM-P4	800FP-P4
Yellow Pilot Light Operator	800FM-P5	800FP-P5
2-Position Push-Pull, Non-illuminated, 40mm Twist-to-Release Operator, Red	800FM-MT44	800FP-MT44

* Operator Only. Latch as well as power module or contact block required. See accessories chart below.

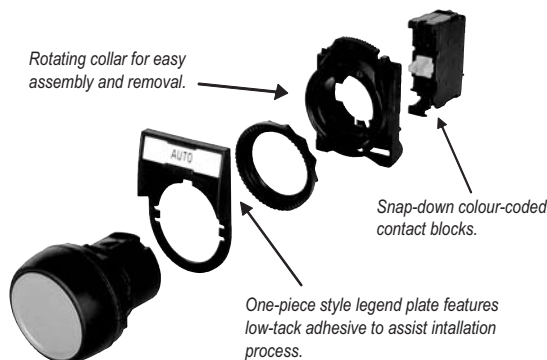
Accessories

Back of Panel			
Device	Description	Part Number METAL	Part Number PLASTIC
Power module c/w Latch	24V AC/DC Incandescent	800F-MD3C	800F-PD3C
	120V AC Incandescent	800F-MD5C	800F-PD5C
	No Bulb	800F-MD0C	800F-PD0C
Latch & Contact Block with Screw Terminations	1 N.O.	800F-MX10	800F-PX10
	1 N.C.	800F-MX01	800F-PX01
	1 N.O. - 1 N.C.	800F-MX11	800F-PX11
	2 N.O.	800F-MX20	800F-PX20
Latch		800F-ALM	800F-ALP
Contact (screw terminations)	1 N.O.		800F-X10
	1 N.C.		800F-X01
Round Legend Plate	Yellow "EMERGENCY STOP"	60 mm diameter	800F-15YE112
Legend Plate	White - Blank	30 x 50 mm	800F-35WE100
	Hole Plug	Gray	800F-N8
	Full Voltage Incandescent Bulb	130V AC/DC	800F-N130
		24V AC/DC	800F-N157



Anti-rotation tab provides accurate alignment and eliminates operator and legend plate rotation. The tab is easily removed for use in panels without notches.

Rotating collar for easy assembly and removal.



Snap-down colour-coded contact blocks.

One-piece style legend plate features low-tack adhesive to assist installation process.