

Modifications and Accessories, Continued

Replacement Color Caps

Color caps listed below are for field replacement on installed devices or for completion of devices ordered with color caps omitted.



Push-Pull



Push-Pull/Twist



Push-Pull Jumbo



Push-Pull/Twist Jumbo

Push-Pull Color Caps, Illuminated				
Color	Push-Pull	Push-Pull/Twist	Push-Pull Jumbo	Push-Pull/ Twist Jumbo
	Cat. No.	Cat. No.	Cat. No.	Cat. No.
Amber	800T-N159A	800T-N301A	800T-N209A	800T-N306A
Blue	800T-N159B	800T-N301B	800T-N209B	800T-N306B
Clear	800T-N159C	800T-N301C	800T-N209C	800T-N306C
Green	800T-N159G	800T-N301G	800T-N209G	800T-N306G
Red	800T-N159R	800T-N301R	800T-N209R	800T-N306R
White	800T-N159W	800T-N301W	800T-N209W	800T-N306W



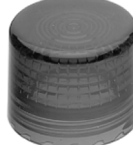
Illuminated Mushroom



Illuminated Jumbo Mushroom



Standard



Push-to-Test



Standard Knob



Knob Lever



*Glass Caps
for Pilot Lights*

Color	Push Button Color Caps, Illuminated		Pilot Light Color Caps		Selector Switch Knobs, Illuminated		Glass Caps for Pilot Lights
	Mushroom	Jumbo Mushroom	Standard ❶	Push-to-Test ❶	Standard Knob	Knob Lever	
	Cat. No.	Cat. No.	Cat. No.	Cat. No.	Cat. No.	Cat. No.	
Amber	800T-N304A	800T-N305A	800T-N26A	800T-N42	800T-N297A	800T-N298A	800T-N22
Blue	800T-N304B	800T-N305B	800T-N26B	800T-N43	800T-N297B	800T-N298B	800T-N23
Clear	800T-N304C	800T-N305C	800T-N26C	800T-N45	800T-N297C	800T-N298C	800T-N25
Green	800T-N304G	800T-N305G	800T-N26G	800T-N41	800T-N297G	800T-N298G	800T-N21
Red	800T-N304R	800T-N305R	800T-N26R	800T-N40	800T-N297R	800T-N298R	800T-N20
White	800T-N304W	800T-N305W	800T-N26W	800T-N44	800T-N297W	800T-N298W	800T-N24

❶ Available in bulk quantities of 20. Add suffix (-BP) to the cat. no. and order in multiples of 20.

Protective Boots

Boots supplied with control stations and components are made of a hypalon material with brass insert ring. To order boots with silicone, urethane or ethylene-propylene material, see table below. Material application information shown on page 10-89.



*Protective Boot for Push Button
Cat. No. 800H-N5A*

Protective Boots for Non-Illuminated Push Buttons ❷					
Insert Material	Color	Material			
		Hypalon	Silicone ❶	Urethane ❷	Ethylene Propylene ❸
		Cat. No.	Cat. No.	Cat. No.	Cat. No.
Brass	Red	800H-N5A	800H-N101R	800H-N100R	800H-N103R
	Green	800H-N5B	800H-N101G	800H-N100G	800H-N103G
	Black	800H-N5H	800H-N101B	800H-N100B	800H-N103B
	Yellow	800H-N5E	800H-N101Y	800H-N100Y	—
	Blue	800H-N5C	800H-N101BL	800H-N100BL	—

❷ May be added to flush or extended head push button units to protect against foreign materials reaching the opening between the button and the locking ring.