

Interlock Switches

Non contact Switches

18mm Proximity Style



Description

This magnetically actuated safety switch offers Non contact reliability together with tolerance to misalignment. They are designed to be installed so that when a guard door is opened, the action of the magnetic actuator being removed from the switch opens the 2 N.C. safety contacts which are intended for the isolation of control power to a machine primary control element.

Features

- Non contact actuation
- High tolerance to misalignment
- IP67 (NEMA 6P) Rating
- 18mm barrel type
- Sensor and adaptor are sold separately
- Senses through stainless steel

Specifications

Standards	EN954-1, ISO13849-1, IEC/EN60204-1, NFPA79, EN1088, ISO14119, ANSI B11.19, AS4024.1
Category	Cat. 1 Device per EN954-1 Dual channel interlocks suitable for Cat. 3 or 4 systems
Approvals	CE marked for all applicable directives and cULus
Contact Arrangements	2 N.C. Safety Contact
Electrical Life	1 x 10 ⁶ at rated load
Safety Contact Switching Capability	24V DC - 1A max
Safety Contact External Fusing	≤1.6A quick blow
Operating Distance – Make	17mm (0.66in)
Operating Distance – Break	23mm (0.91in)
Closing Time	3.0ms
Dropout Time	2.1ms
Bounce Time	0.7ms
Initial Contact Resistance	15mΩ
Initial Capacitance, Terminal to Terminal	0.65pF
Initial Insulation Resistance, Terminal to Terminal	1 x 10 ⁶ Ω
Min Initial Breakdown Voltage	600VAC
Mechanical Life	10 x 10 ⁶
Mounting	Any Position
Case Material	Red moulded ABS Plastic
Cable	Pico quick-disconnect 4-pin
Operating Temperature	-10°C to +55°C (14° to +131°F)
Environmental	IP67 (NEMA 6P)
Vibration	7-15g, 10 to 200Hz
Shock	50g

Interlock Switches

Non contact Switches

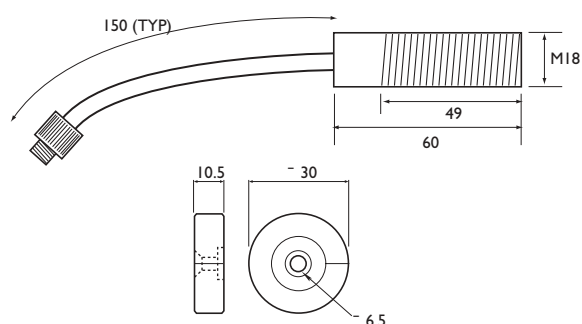
18mm Proximity Style

Product Selection

Safety Contacts	Auxiliary Contacts	Connection	Catalogue Number
2 N.C.	None	4-Pin Pico QD	440N-S32099
		4-Pin Micro QD	440N-S_____
		3m Cable	440N-S_____
		10m Cable	440N-S_____
Actuator			440N-A32100
Mating Cable	4-pin pico straight 2m. See page 3-87 in the <i>On-Machine™ Connectivity</i> catalog (M115-CA001A-EN-P) for details and additional lengths.		889P-F4AB-2

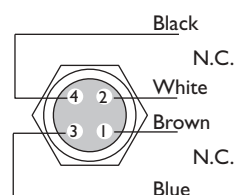
Note: Contacts are described with the guard door closed, that is, actuator in place.

Approximate Dimensions—mm (inches)



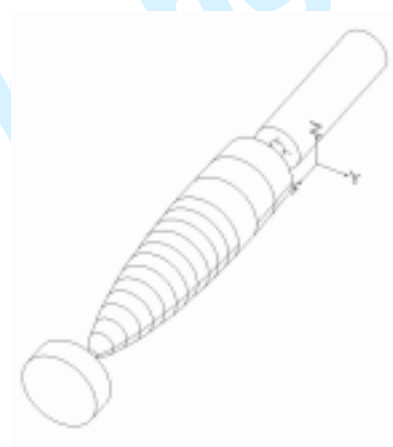
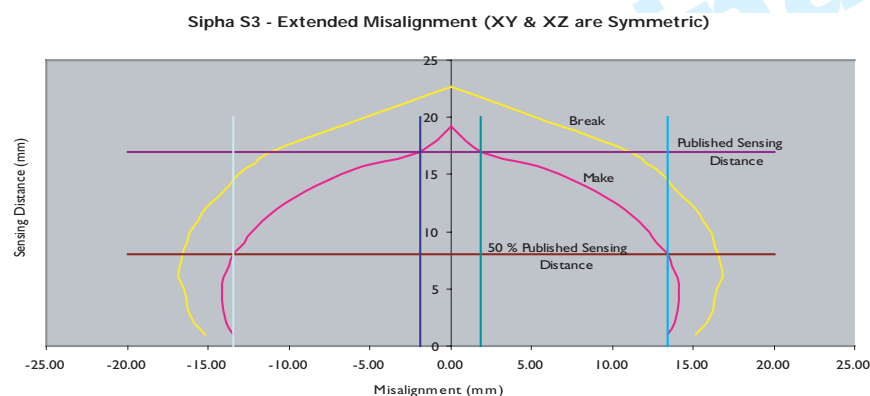
Dimensions are not intended to be used for installation purposes.

Typical Wiring Diagrams



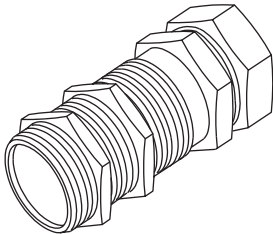
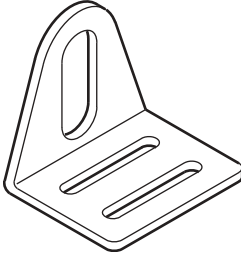
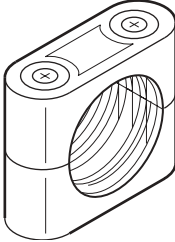
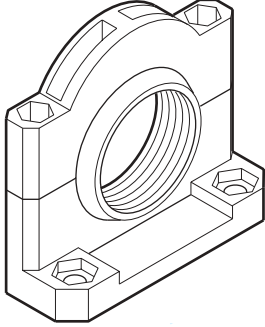
Application Details

See page 3-54 for operating principles and mounting examples.



Interlock Switches
Non contact Switches
 18mm Proximity Style

Accessories

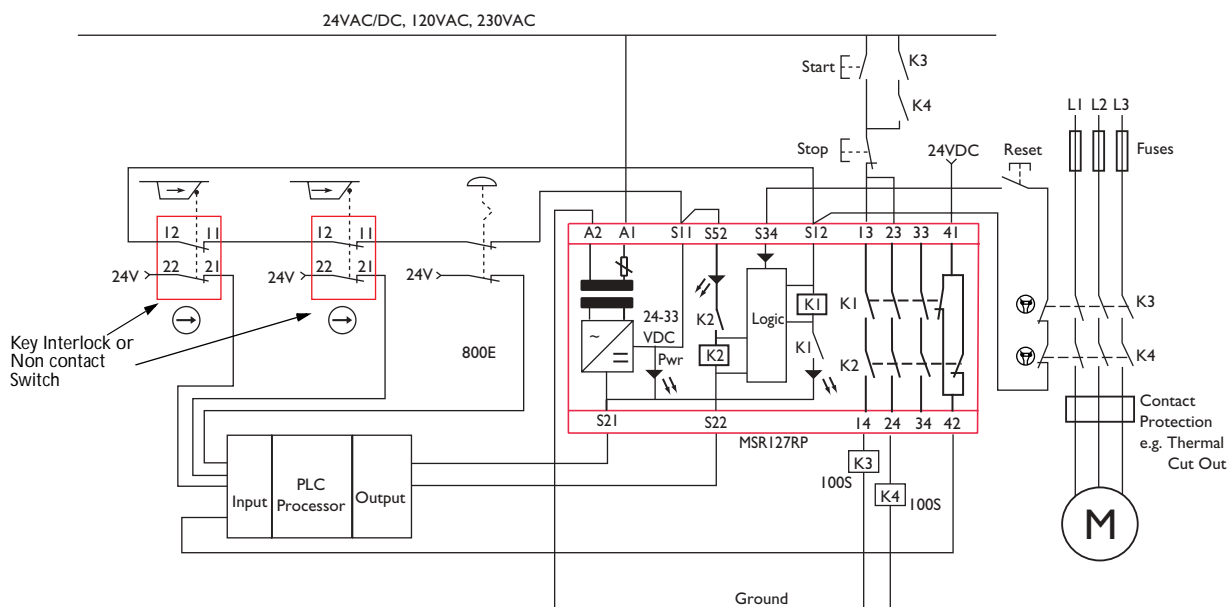
Description		Catalogue Number
	18mm Mounting Bracket Quick-Change Style	871A-BQN18
	18mm Right Angle Mounting Bracket Zinc-Plated Steel	871A-BRN18
	18mm Right Angle Mounting Bracket Stainless Steel	871A-BR518
	18mm Mounting Bracket Clamp Style	871P-BP18
	18mm Mounting Bracket Swivel/Tilt Style	60-2649

Interlock Switches

Non contact Switches

18mm Proximity Style

Applications



Example Layout without Enunciation

