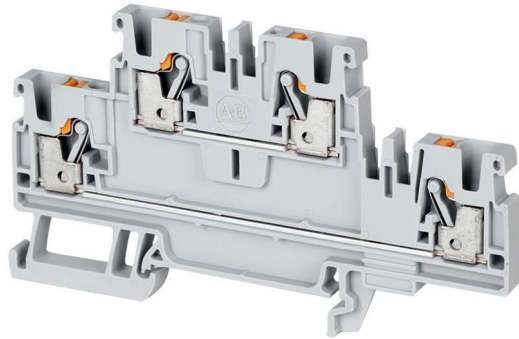


## Double-level, Feed-through Terminal Blocks

### 1492-PD3



#### Terminal Blocks—Dimensions (W x H x L): 5.1 x 50.5 x 90 mm

Color	Cat. No.	Pkg. Qty.	Color	Cat. No.	Pkg. Qty.
Grey	1492-PD3	50	Green	1492-PD3-G	50
Red	1492-PD3-RE	50	Yellow	1492-PD3-Y	50
Blue	1492-PD3-B	50	Orange	1492-PD3-OR	50
Black	1492-PD3-BL	50	White	1492-PD3-W	50

#### Specifications — Double-level Feed-through Terminal Block

Certifications	UL /CSA	IEC	ATEX
Voltage Rating	600V AC/DC	800V AC/DC	550V AC/DC
Maximum Current	20 A	24 A	21 A
Wire Range (Rated Cross Section)	28...12 AWG	2.5 mm <sup>2</sup>	2.5mm <sup>2</sup>
Wire Strip Length	0.4 in. (10 mm)		
Density	59 pcs/ft (196 pcs/m)		
Housing Temperature Range	-76...266°F (-60...130 °C)		

Accessories	Cat. No.	Pkg Qty.	
<b>Mounting Rails, End Barriers, End Anchors and Retainers</b>			
Mounting Rail 1 m Symmetrical DIN	Steel	199-DR1	10
	Aluminum	1492-DR5	10
	Hi-Rise (Aluminum)	1492-DR6	2
	Angled (Steel)	1492-DR7	2
End Barriers	Grey	1492-EBPD3	20
	Blue	1492-EBPD3-B	20
	Yellow	1492-EBPD3-Y	20
End Retainer	1492-ERL35	20	
End Anchor DIN Rail	Normal Duty	1492-EAJ35	100
	Heavy Duty	1492-EAHJ35	50
	Normal Duty	1492-EAP35	50

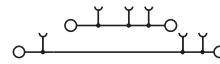
Accessories	Cat. No.	Pkg Qty.
<b>Center Jumpers<sup>(1)</sup></b>		
2-pole	1492-CJP3-2	60
3-pole	1492-CJP3-3	20
4-pole	1492-CJP3-4	
5-pole	1492-CJP3-5	
6-pole	1492-CJP3-6	
7-pole	1492-CJP3-7	
8-pole	1492-CJP3-8	
9-pole	1492-CJP3-9	
10-pole	1492-CJP3-10	
20-pole	1492-CJP3-20	
50-pole	1492-CJP3-50	

Test Plugs			
Test Plugs	Start Test Plug	1492-PTPS	50
	Test Plug	1492-P3TPE	50

Marking Systems		
ClearPlot Basic Marker Cards	1492-MR5X8 (120/card)	5 cards
ClearMultiprint Markers	1492-MT5X8 (800/roll)	1 roll

(1) Available in orange as standard, to order other colors add the appropriate suffix to the catalog number listed: Blue =B, Red = RE. Example for a red 2-pole center jumper, the catalog number will be 1492-CJP3-2-RE.

#### Wiring Diagram



**IMPORTANT** See [page 69](#) for ferrule selection.