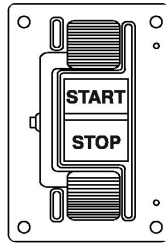


Half Lever

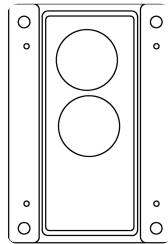
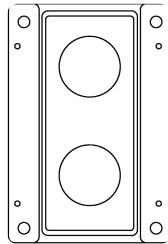
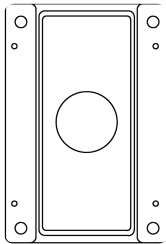
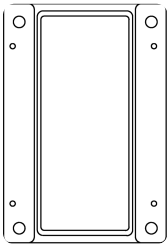


Double Lever Momentary

Half Lever	Double Lever Momentary	Double Lever Maintained	Double Lever Momentary/Maintained*
Cat. No.	Cat. No.	Cat. No.	Cat. No.
800H-NP14	800H-NP15	800H-NP16	800H-NP34

* A normally open circuit configuration is recommended for use behind this momentary lever and a late break normally closed circuit configuration is required for use behind the maintained lever to achieve proper functioning of the device.

Covers, Component Type Button



Blank	One Hole‡	Two Holes§	Two Hole Special♣
Cat. No.	Cat. No.	Cat. No.	Cat. No.
800H-NP32	800H-NP30	800H-NP31	800H-NP33

‡ One-hole covers use a jumbo legend plate only.

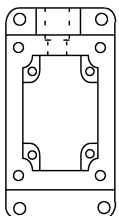
§ Two-hole covers use a standard legend plate only.

♣ This special two-hole cover can accommodate the pigtail pilot light (**Bulletin 800H-LPK10** series), the dual push button or any non-illuminated unit. Legend plates (**Cat. No. 800H-Y140J** green and red split-field) and (**Cat. No. 800H-Y141J** grey full field), are the only legend plates suitable for use with this cover.

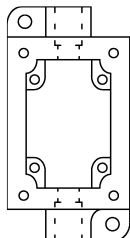
Assembled Bases (for Field Assembly and Custom Stations)

Enclosure Covers — See enclosure cover tables for a complete listing of covers for these bases.

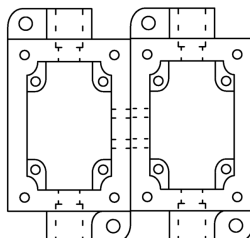
Special Conduit Entries — For conduit entries not listed, consult your local Rockwell Automation sales office or Allen-Bradley distributor.



1-Gang Shallow*



1-Gang Deep‡



2-Gang Horizontal‡