



Bulletin 1492-MC Circuit Breakers Industrial Circuit Breakers for North American Applications

The Bulletin 1492-MC line includes:

- 1/2 in. wide circuit breakers
- 1 in. wide circuit breakers
- Ground Fault Circuit Interrupters (GFCIs)
- Ground Fault Equipment Protector (GFEPs)

Features

- Designed, manufactured and listed to UL 489 (CSA C22.2, No. 5)
- Thermal-magnetic protection
- All Ratings (10...100 A) are HACR rated
- 10 kAIC (10...100 A)
- Finger-safe design (front) (1/2 in. wide)
- DIN Rail mounting (120/240 & 240V AC)
- Three-position handle (ON, Tripped (Middle), OFF)
- (Line and load) wire connections

Table of Contents

AC DIN Rail Mounting	7-11
Specifications.....	7-12
Product Selection	7-12
Approximate Dimensions.....	7-13

Certifications

UL Listed
 CSA Certified

Standards Compliance for Bul. 1492-MC

- UL 489
- CSA C22.2 No. 5
- HACR (10...100 A)
- SWD (15 and 20 A) for Switching Duty for fluorescent lighting applications

Standards Compliance for GFCI (5 mA trip sensitivity)

- UL 943
- CSA C22.2 No. 144

Standards Compliance for GFEP (30 mA trip sensitivity)

- UL 1053
- CSA C22.2 No. 144

Bulletin 1492-MC Thermal Magnetic Description Thermal Magnetic Circuit Breakers

Bulletin 1492-MC Circuit Breakers for Branch Circuit protection are available in one (1)-, two (2)-, and three (3)-pole construction in 120/240 volt rating, 240 volt rating and as one (1)-pole and two (2)-pole devices in 480/277 volt rating. Versions are available as Ground Fault Circuit Interrupters and as Ground Fault Equipment Protectors.

The 1492-MC product line consists of Thermal Magnetic Circuit Breakers and Ground Fault Sensing Breakers that are designed, manufactured, and certified to North American standards, UL 489, UL 943, UL1093, and the equivalent CSA standards, CSA 22.2 No. 5.1, 22.2 No. 144.

Bul. 1492-MC Thermal Magnetic Circuit Breakers are general-purpose devices suitable for the majority of industrial, inverse time circuit breaker applications.

They combine thermal and magnetic trip actions and provide accurate overload and short-circuit protection for conductors and connected equipment.

Circuit Breaker Application Information

Selection of a Bul. 1492-MC circuit breaker with appropriate circuit protection includes consideration of:

- Circuit voltage
- Circuit frequency
- Available short circuit current
- Continuous current rating
- Application considerations
- Special operating conditions

The following discussion is based upon National Electric Code and UL requirements. Similar considerations are appropriate for Canadian applications.

Circuit Voltage

Bul. 1492-MC circuit breakers are rated by voltage class. Applications should not exceed the listed voltage range (see Table 1).

Circuit Frequency

Bul. 1492-MC circuit breakers may be applied to frequencies from DC up to 60 Hz without derating. For applications above 60...400 Hz, contact Rockwell Automation with specific application information for the derating of the circuit breakers.

Available Short Circuit Current

Bul. 1492-MC circuit breakers should only be applied in those applications in which the available short-circuit (or fault) current is less than or equal to the interrupting rating shown in the Voltage and Interrupting Ratings table.

Table 1. Voltage and Interrupting Ratings

AC Voltage	DC Voltage *	Interrupting Ratings (rms Symmetrical Amperes)		Cat. No.
		AC Rating	DC Rating *	
120/240	24, 48, 62.5	10,000	3,000	1492-MCAA1xx
				1492-MCAA2xx
240	24, 48, 62.5		3,000	1492-MCAA2Hxx
				1492-MCAA3xx
120/240	⊛		⊛	1492-MCBA1xx
				1492-MCBA2xx
240	⊛		⊛	1492-MCBA2Hxx
				1492-MCBA3xx
120	⊛	10,000	⊛	1492-MCEA1xx
120/240				1492-MCEA2xx
120				1492-MCGA1xx
120/240				1492-MCGA2xx

* Rating as supplementary protector.

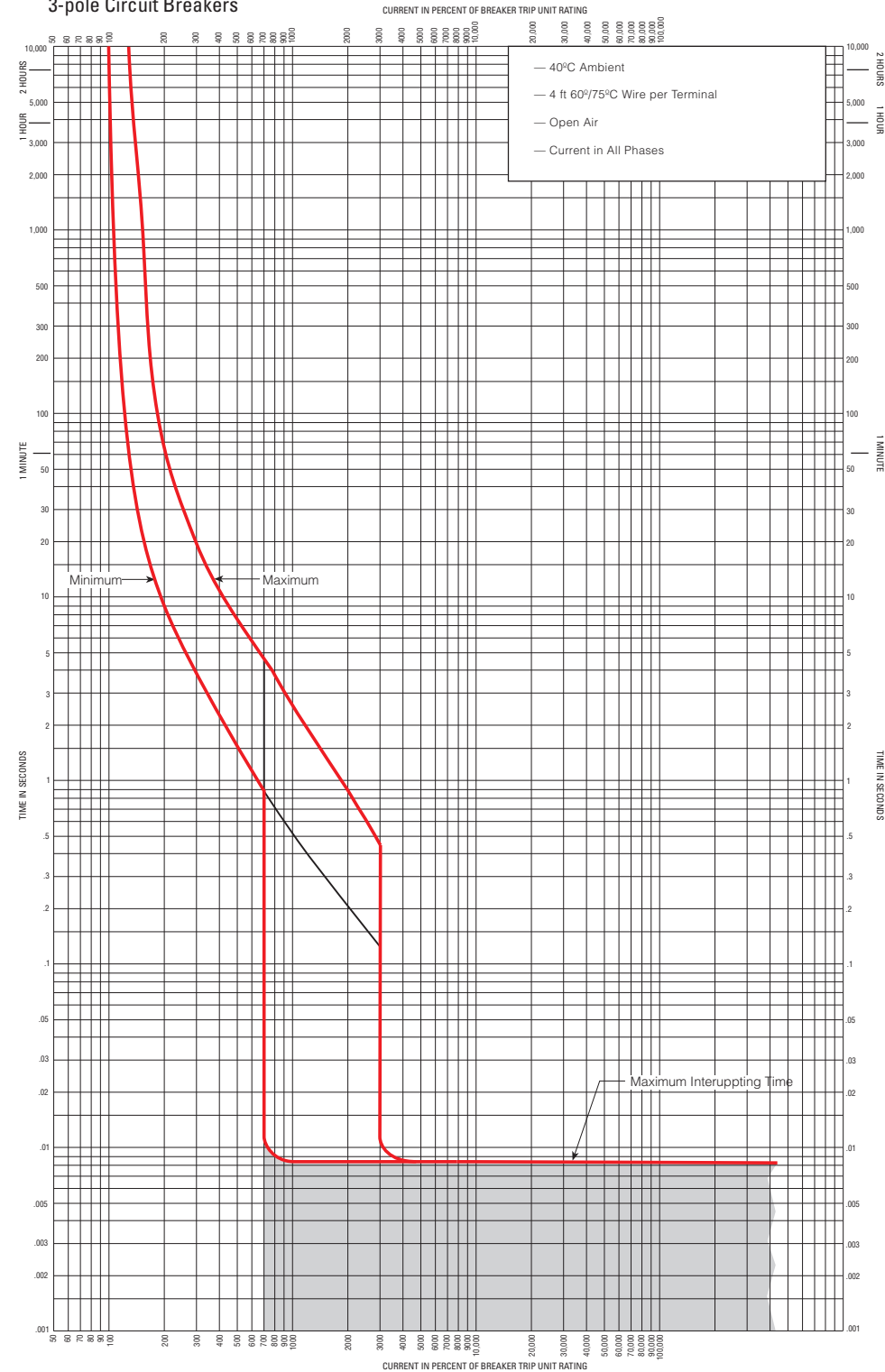
⊛ Consult your local Rockwell Automation sales office or Allen-Bradley distributor for specific rating.

Time Current Curve – 3-Pole Circuit Breakers

Time Current Curve

1492-MCAA3_{NN}
1492-MCBA3_{NN}

3-pole Circuit Breakers



1492-MC Cat. No. Explanation

Examples given in this section are for reference purposes. This basic explanation should not be used for product selection; not all combinations will produce a valid catalog number.

1492-MC A A 1 15
 a b c d

<i>a</i> Body Style		<i>c</i> Poles		<i>d</i> Current Rating Size			
Code	Description	Code	Description	Code	Description	Code	Description
A	1/2 in. wide/pole (DIN Rail mounting)	1	1 pole	10	10 A	50	50 A
B	1 in. wide/pole (DIN Rail mounting)	2	2 poles	15	15 A	55	55 A
E	GFEP (30 mA)	2H	2 poles (240V AC)	20	20 A	60	60 A
G	GFCI (5 mA)	3	3 poles	25	25 A	70	70 A
				30	30 A	80	80 A
				35	35 A	90	90 A
				40	40 A	A0	100 A
				45	45 A		

<i>b</i> Interrupt Rating	
Code	Description
A	10 kA AIC

Bul. 1492-MC Thermal Magnetic Product Selection 120/240 and 240V AC DIN Rail Mounting

120/240 and 240V AC DIN Rail Mounting						
Continuous Ampere Rating @ 40°C (104°F)	Width per pole [in.]	Cat. No.		Width per pole [in.]	Cat. No.	
		120/240V AC			240V AC	
		1-pole	2-poles		2-poles	3-poles
10	1/2	1492-MCAA110	1492-MCAA210	—	—	—
15	1/2	1492-MCAA115	1492-MCAA215	1/2	1492-MCAA2H15	1492-MCAA315
20	1/2	1492-MCAA120	1492-MCAA220	1/2	1492-MCAA2H20	1492-MCAA320
25	1/2	1492-MCAA125	1492-MCAA225	1/2	1492-MCAA2H25	1492-MCAA325
30	1/2	1492-MCAA130	1492-MCAA230	1/2	1492-MCAA2H30	1492-MCAA330
35	1/2	1492-MCAA135	1492-MCAA235	1	1492-MCBA2H35	1492-MCBA335
40	1/2	1492-MCAA140	1492-MCAA240	1	1492-MCBA2H40	1492-MCBA340
45	1/2	1492-MCAA145	1492-MCAA245	1	1492-MCBA2H45	1492-MCBA345
50	1/2	1492-MCAA150	1492-MCAA250	1	1492-MCBA2H50	1492-MCBA350
55	1/2	1492-MCAA155	1492-MCAA255	1	1492-MCBA2H55	1492-MCBA355
60	1/2	1492-MCAA160	1492-MCAA260	1	1492-MCBA2H60	1492-MCBA360
70	1	1492-MCBA170	1492-MCBA270	1	1492-MCBA2H70	1492-MCBA370
80	1	1492-MCBA180	1492-MCBA280	1	1492-MCBA2H80	1492-MCBA380
90	1	1492-MCBA190	1492-MCBA290	1	1492-MCBA2H90	1492-MCBA390
100	1	1492-MCBA1A0	1492-MCBA2A0	1	1492-MCBA2HA0	1492-MCBA3A0

1492-MC Ground Fault Sensing

The Bulletin 1492-MC Circuit Breakers with Ground Fault protection for Branch Circuits are available in 1- and 2-pole construction in 120/240V rating. Versions are available as Ground Fault Circuit Interrupters and as Ground Fault Equipment Protectors.

When protection from low-level fault currents for North American standards is required, two versions of protection are available.

- Circuit Breakers with protection for personnel use a threshold of 5 mA sensing to provide protection for people. These are typically known as Ground Fault Circuit Interrupters or GFCIs.
- Circuit Breakers that provide protection for equipment at a sensing threshold of 30 mA are also available. These are typically known as Ground Fault Equipment Protectors or GFEPs.

The following devices are tested and listed to meet the North American standards of UL 489, UL 943 (for GFCI), UL1053 (for GFEP), and CSA 22.2 No.5.1.

It is recommended that the devices be tested monthly by using the TEST button to check for proper operation of the device.

Auxiliary Devices

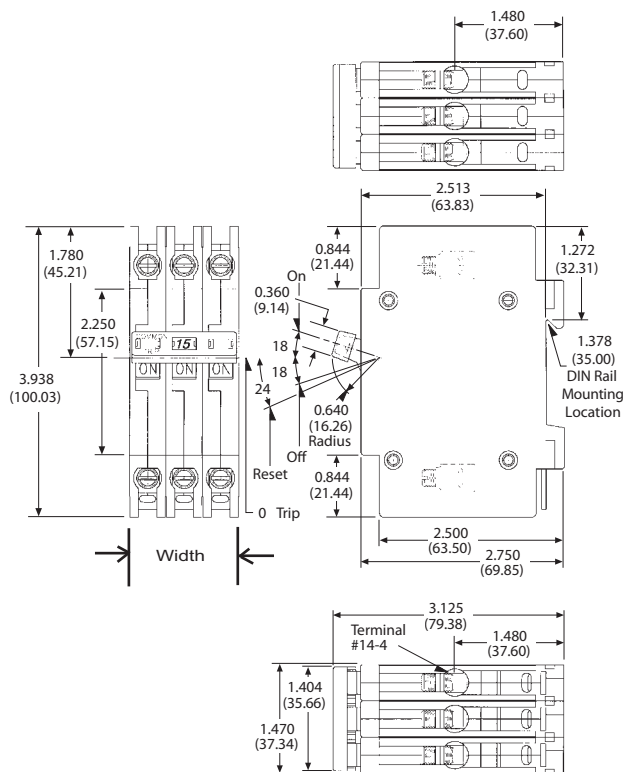
Device description	1-pole	2- and 3-poles
Locking Attachment for Circuit Breaker	1492-MCAAxxx	1492-AMCAL1
	1492-MCBAxxx	1492-AMCBL1
Finger protection cover for 1 in. wide Cat. No. 1492-MCBxxx, package of 10 (one required for line and one required for load for each pole) (not for GFCI / GFEP)	1492-AMCBFP	
DIN Rail adapter, per pole, DIN Rail mounting for GFCI, GFEP	1492-AMCDIN1	
Panel Mounting Clips for GFCI and GFEP, two required per device	1492-AMCP1	

1492-MC Approximate Dimensions

Note: Dimensions are shown in inches (millimeters). Dimensions are not intended for manufacturing purposes.

Catalog Type	No. of Poles	Continuous Current Rating [A]	Width [in.]
1492-MCAA1xx	1	10...60	0.490
1492-MCAA2xx	2	10...60	0.980
1492-MCAA2Hxx	2	15...30	0.980
1492-MCAA3xx	3	15...30	1.470
1492-MCBA1xx	1	70...100	1.000
1492-MCBA2xx	2	70...100	2.000
1492-MCBA2Hxx	2	35...100	2.000
1492-MCBA3xx	3	35...100	3.000
1492-MCEA1xx	1	15...50	0.990
1492-MCEA2xx	2	15...50	1.980
1492-MCGA1xx	1	15...50	0.990
1492-MCGA2xx	2	15...50	1.980

1492-MCAAxx



1492-MCEA1xx 1492-MCGA1xx

