

## Product Overview

Devices available in the Allen-Bradley NEMA/EEMAC\* line include Terminal Blocks, Isolation Switch Blocks, and Fuse Blocks.

## Terminal Blocks

Allen-Bradley NEMA/EEMAC terminal blocks are available in ten colors for easy circuit identification. Colors and suggested uses are:

- RED for AC Control Circuits
- BLUE for DC Control Circuits
- BLACK for AC/DC Power Circuits
- ORANGE for Data Collection Circuits
- GREEN for Ground Circuits
- YELLOW for Externally Fed Circuits (Interlocks)
- BROWN for Miscellaneous Circuits
- VIOLET/GREY to denote PLC Inputs and Outputs
- WHITE for Neutral Circuits

Most NEMA/EEMAC blocks are available preassembled on a breakaway mounting channel, complete with one end anchor, one retaining clip, and one end barrier.

## Open Construction Terminal Blocks

Open construction blocks (Styles C and F) allow easy visual verification that the wire is properly positioned in the clamping area, and allows the use of a standard screwdriver for wiring. Style C and F blocks mount securely on Allen-Bradley rail.

Cat. No. 1492-CAM blocks also mount on DIN Rail. Several Style C blocks accept a snap-on marker for marking long wire identifications. All open construction blocks have:

- Tin-plated copper alloy connections for corrosion resistance
- A write-on marking surface for easy circuit identification
- Optional marking strips to make mass markings easier

## Isolation Switch Blocks

- Allow easy, positive electrical circuit isolation
- Are available in both open and high density styles
- Feature a write-on marking surface for easy circuit identification

## Fuse Blocks

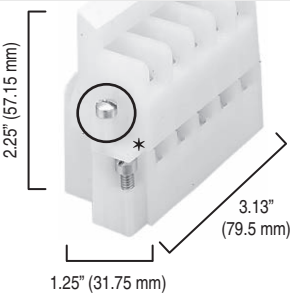
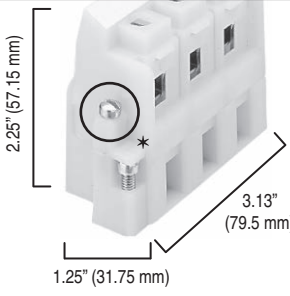
- Provides a simple way to add overcurrent protection into a circuit
- Can be used with the following fuse styles: 13/32 in. x 1-1/2 in., 1/4 in. x 1-1/4 in., and GMT-type alarm fuses. Blown fuse indicators are available on the 1/4 in. x 1-1/4 in. and 13/32 in. x 1-1/2 in. blocks. The indicator lights up when the fuse is blown, speeding troubleshooting. The GMT-type fuse block has a visual alarm flag that also acts as an output contact for an electrical signal when the fuse is blown.

## UL and CSA File Numbers

NEMA/EEMAC Style Terminal Blocks have a 94-V2 flammability rating. The NEMA/EEMAC line is UL Recognized and CSA Certified.

- UL File Number E40735, Guide Number XCFR2
- UL File Number E34648, Guide Number IZLT2 (for Catalog Number 1492-CE6 only)
- CSA File Number LR67896, Class 6228-01

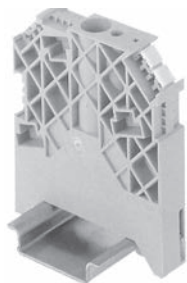
\* **NEMA — National Electrical Manufacturer's Association**  
**EEMAC — Electrical and Electronic Manufacturer's Association of Canada**

	1492-EC85		1492-ED103	
Dimensions are not intended to be used for manufacturing purposes.				
<b>Specifications</b>	5-pole terminal block. Pulls apart to disconnect all poles from the circuit.		3-pole terminal block. Pulls apart to disconnect all poles from the circuit.	
Certifications (See page 12-3)	UL/CSA		UL/CSA	
Voltage Rating	600V AC/DC		600V AC/DC	
Maximum Current (per pole)	25 A		60 A	
Wire Range (Rated Cross Section)*	#20...12 AWG (0.75...4 mm²)		#14...4 AWG (2.5...25 mm²)	
Wire Strip Length	0.38 in. (9.7 mm)		0.38 in. (9.7 mm)	
Recommended Tightening Torque	6...16 lb•in (0.7...1.8 N•m)		10...30 lb•in (1.1...3.4 N•m)	
Insulation Temperature Range	-40...+22 °F (-40...+105 °C)		-40...+221 °F (-40...+105 °C)	
<b>Terminal Blocks</b>	Cat. No.	Pkg Qty.	Cat. No.	Pkg Qty.
Terminal Block	1492-EC85	1	1492-ED103	1
<b>Accessories (page 12-109)</b>	Cat. No.	Pkg Qty.	Cat. No.	Pkg Qty.
Jumpers: 2-Pole Uninsulated	1492-N38	50	1492-N38	50
Anchor Unit: (required every 12th block)	Not Required	—	Not Required	—
End Piece	Not Required	—	Not Required	—

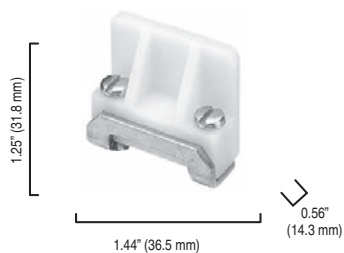
\* #8-32 screw.  
\* Both terminal blocks accept 1 wire per terminal.

## End Anchors

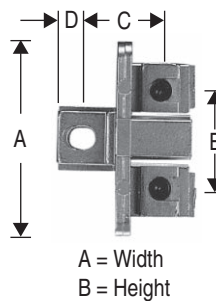
1492-EAHJ35



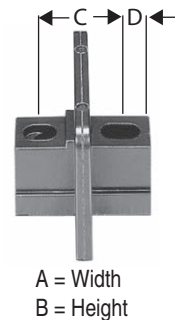
1492-N23



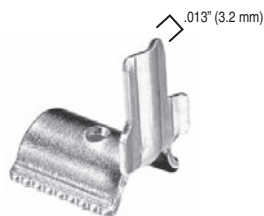
1492-15A, 1492-25A



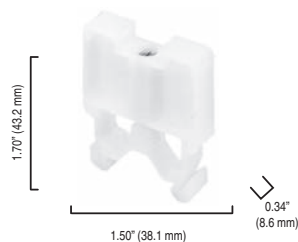
1492-15E, 1492-25E



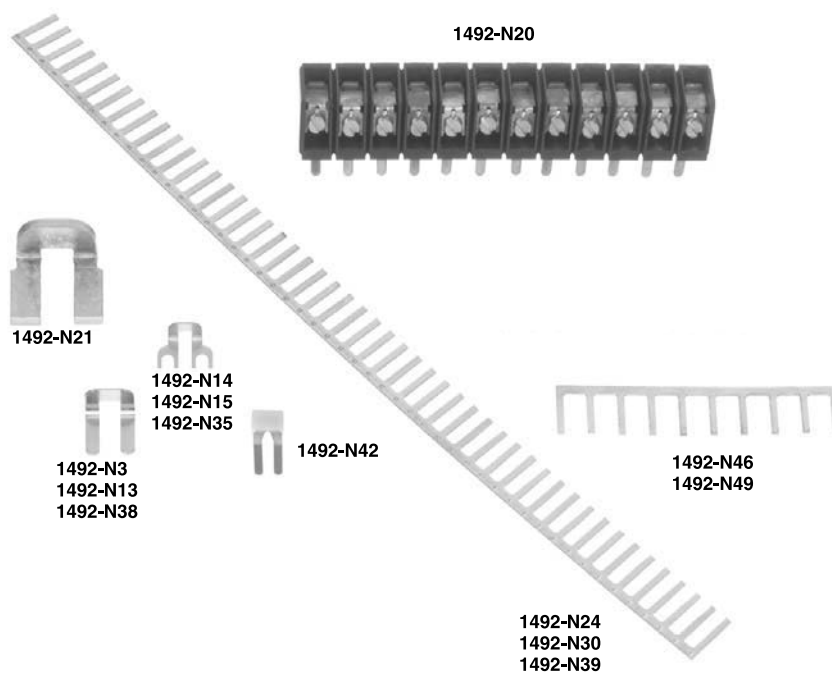
1492-N2



1492-N47



Cat. No.	A	B	C	D	E
1492-15A	1.5 in. (38.1 mm)	1.03 in. (26.2 mm)	0.594 in. (15.1 mm)	0.234 in. (5.9 mm)	0.75 in. (19.1 mm)
1492-15E	1.5 in. (38.1 mm)	1.03 in. (26.2 mm)	0.594 in. (15.1 mm)	0.234 in. (5.9 mm)	—
1492-25A	1.88 in. (47.8 mm)	1.19 in. (30.2 mm)	0.688 in. (17.5 mm)	0.203 in. (5.2 mm)	0.97 in. (24.6 mm)
1492-25E	1.88 in. (47.8 mm)	1.19 in. (30.2 mm)	0.688 in. (17.5 mm)	0.234 in. (5.9 mm)	—



\* The 1492-SJS Insulating Sleeve reduces exposure to live parts on the 1492-N39 and 1492-N49. The 1492-SJS used with the 1492-N39 and 1492-H1 or 1492-HM1 provides IEC 947 IP2X finger protection.

