

Safety Connection Systems
Safety Wired Distribution Boxes
 8-Pin, Two OSSD Signals per Port, M23 Main Connector

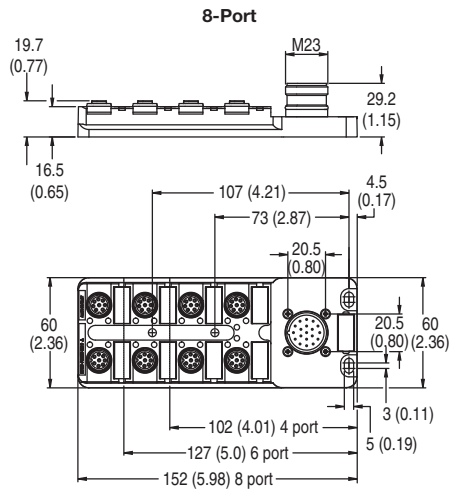
Product Selection

Face View of Female	No. of Ports	Illuminated	Rating	Face View of Male	Cat. No.
	4 port	PNP LED	10...30V DC		898D-P84RT-M19
	8 port				898D-P88RT-M19
8-pin shorting plug					898D-81RU-DM
8-pin field attachable connector-straight					871A-TS8-DM1
Sealing caps					1485A-M12
Labels					1492-MS9X20
Device Patchcords (straight to straight)					* 889D-F8ABDM-2
Homerun Patchcord for 4- or 8-Port (Right angle female to straight male)					* 889M-R19RMMU-2
Homerun Cordset for 4- or 8-Port (Right angle female to flying leads)					* 889M-R19RM-2

* Replace -2 with -1, -3, -5, -10 for standard length in meters.

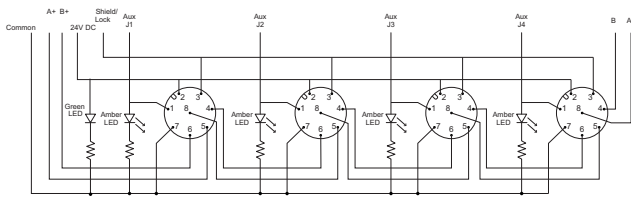
Approximate Dimensions

Dimensions are shown in mm (in.). Dimensions are not intended to be used for installation purposes.

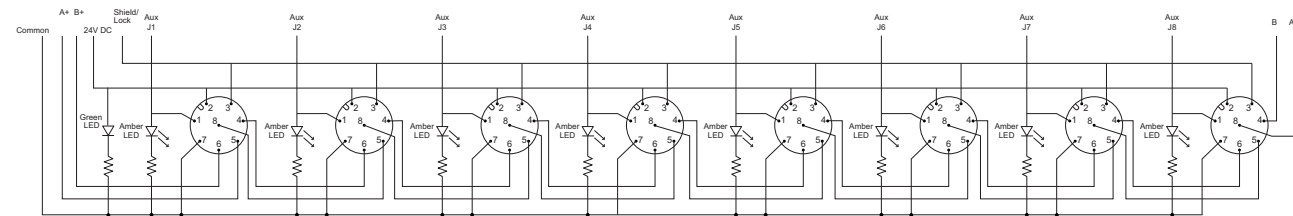


Wiring Diagrams

4-Port Safety Distribution Block



8-Port Safety Distribution Block



5-Safety Connections