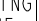



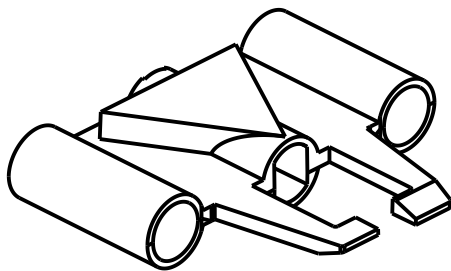
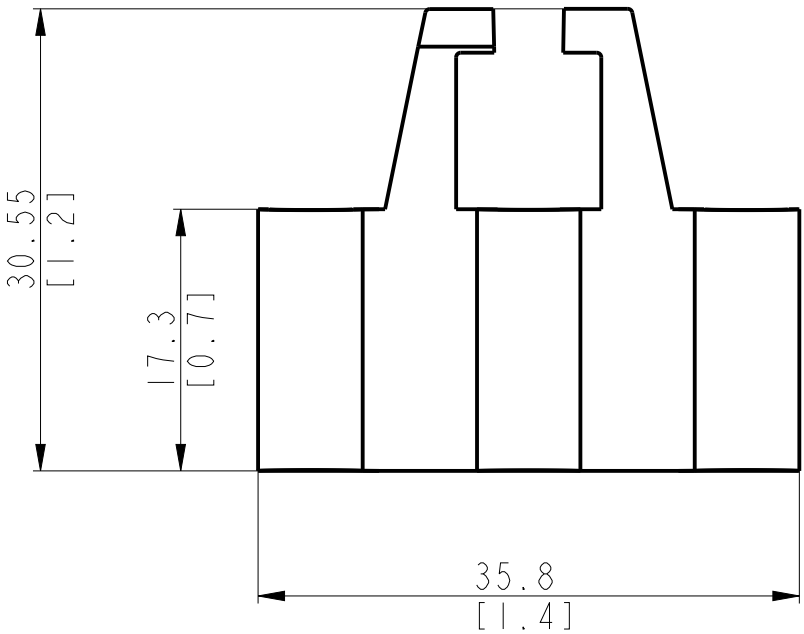
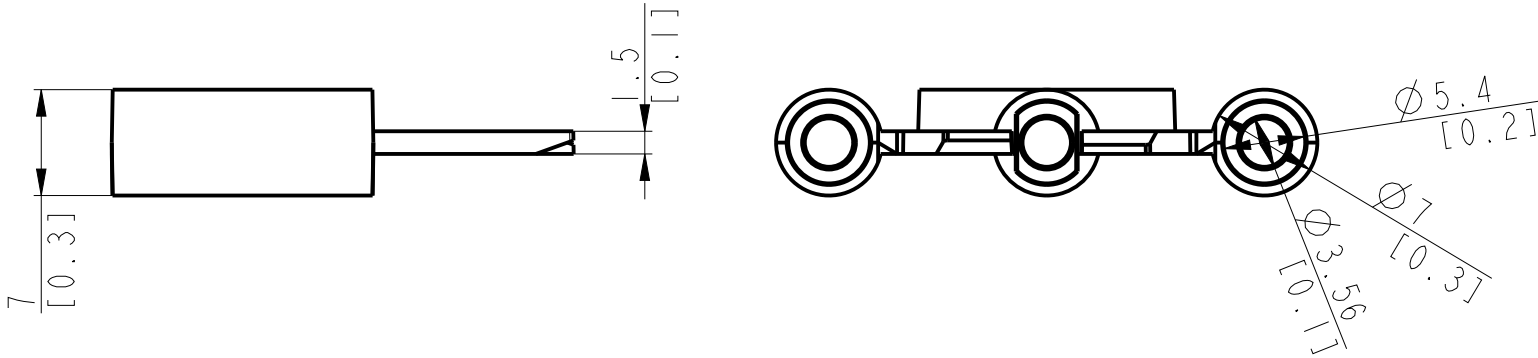



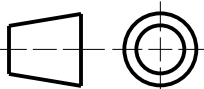
<u>CRITICAL TO QUALITY CLASSIFICATION TABLE</u>					
P=PERFORMANCE, F=FIT, A=ASSEMBLY X=IDENTIFIES APPLICABLE CLASSIFICATION(S) ◇=ENGINEERING AND/OR MANUFACTURING REQUIREMENT Ⓢ=REGULATORY REQUIREMENT-CONFORMANCE IS MANDATORY					
COMMENTS	DRAWING ZONE				
ROHS	GI-HI				X



3D VIEW

-Dimensions are shown in mm [inches]
-Dimensions are not intended to be used
for manufacturing purposes

MUST COMPLY WITH ROCKWELL
AUTOMATION ENVIRONMENTAL
SPECIFICATION 970-20-01

-	-	-	10005902783	PN-514254
WORKMANSHIP STANDARDS	FINISH	MATERIAL	MODEL/DIR NO.	PART/MMR NUMBER
ALL UNDIMENSIONED GEOMETRIES ARE CONTROLLED BY THE CAD MODEL. IN CASE OF DIMENSION DISCREPANCY, CAD MODEL OVERRIDES.	<div><div>Rockwell Automation</div></div>		CONFIDENTIAL AND PROPRIETARY INFORMATION. THIS DOCUMENT CONTAINS CONFIDENTIAL AND PROPRIETARY INFORMATION OF ROCKWELL AUTOMATION, INC. AND MAY NOT BE USED, COPIED OR DISCLOSED TO OTHERS, EXCEPT WITH THE AUTHORIZED WRITTEN PERMISSION OF ROCKWELL AUTOMATION, INC.	
FIRST ANGLE PROJECTION	DESCRIPTION	140MT-C-WSN	DATE: 2021-10-11	SHEET 1 OF 1
			SIZE	DIR
	CREATED BY: NKUMAR23	CHANGED BY: PKLANDE	A3	10005905512
				00