

Momentary Contact Push Button Units, Non-Illuminated



Flush Head Unit
Cat. No. 800H-AP1A



Extended Head Unit
Cat. No. 800H-BP6B

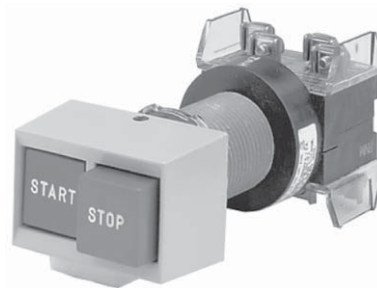


Mushroom Head Unit
Cat. No. 800H-DP6A

Contact Type	Button Color	Flush Head	Extended Head	Mushroom Head
		Cat. No.*	Cat. No.*	Cat. No.*
No Contact	Green	800H-AP1	800H-BP1	800H-DP1
	Black	800H-AP2	800H-BP2	800H-DP2
	Red	800H-AP6	800H-BP6	800H-DP6
1 N.O.	Green	800H-AP1D1	800H-BP1D1	800H-DP1D1
	Black	800H-AP2D1	800H-BP2D1	800H-DP2D1
	Red	800H-AP6D1	800H-BP6D1	800H-DP6D1
1 N.C.	Green	800H-AP1D2	800H-BP1D2	800H-DP1D2
	Black	800H-AP2D2	800H-BP2D2	800H-DP2D2
	Red	800H-AP6D2	800H-BP6D2	800H-DP6D2
1 N.O. - 1 N.C.	Green	800H-AP1A	800H-BP1A	800H-DP1A
	Black	800H-AP2A	800H-BP2A	800H-DP2A
	Red	800H-AP6A	800H-BP6A	800H-DP6A
2 N.O. - 2 N.C.	Green	800H-AP1B	800H-BP1B	800H-DP1B
	Black	800H-AP2B	800H-BP2B	800H-DP2B
	Red	800H-AP6B	800H-BP6B	800H-DP6B

* For long barrel versions, add an **L** to the cat. no. **Example:** Cat. No. 800HL-AP1.

Dual Momentary Contact Push Button Units



Dual Push Button Unit
Cat. No. 800H-DPH16AAXX64

Contact Arrangement		Legend Marking		Cat. No.*
Type	Contacts	Left	Right	
2 N.O. - 2 N.C.		START (Flush/Green)	STOP (Extended/Red)	800H-DPH16AAXX64
		ON (Flush/Black)	OFF (Flush/Black)	800H-DPH22AAXX50
	OPEN (Flush/Black)	CLOSE (Flush/Black)	800H-DPH22AAXX57	
	UP (Flush/Black)	DOWN (Flush/Black)	800H-DPH22AAXX66	
	Blank (Flush/Black)	Blank (Flush/Black)	800H-DPH22AAXX	

* For long barrel versions, add an **L** to the cat. no. **Example:** Cat. No. 800HL-DPH16AAXX64.

Specifications*

Electrical Ratings	
Contact Ratings	Refer to the contact ratings tables below.
Dielectric Strength	2200V for one minute, 1300V for one minute (Logic Reed)
Electrical Design Life Cycles	1 000 000 at max. rated load, 200 000 at max. rated load (Logic Reed)
Mechanical Ratings	
Vibration	10...2000 Hz 1.52 mm displacement (peak-to-peak) Max./10 G Max. (except Logic Reed)
Shock	1/2 cycle sine wave for 11 ms ≥ 25 G (contact fragility) and no damage at 100 G
Degree of Protection	Type 7 & 9 Explosion Proof (Type 3 and Type 4 ratings available with accessories)
Mechanical Design Life Cycles	
Push Buttons	250 000 minimum
Potentiometers	100 000 minimum
All other devices	200 000 minimum
Contact Operation	Shallow and mini contact blocks: slow double make and break Logic Reed & sealed switch contact blocks: snap-action
Wire Gauge/Terminal Screw Torque	# 18...12 AWG/6...8 lb•in
Typical Operating Forces	
Operators without contact blocks:	Flush, extended, standard mushroom, jumbo mushroom: 2.9 lb max. Jumbo and extended aluminum mushroom head: 3.95 lb maximum Maintained selector switch: 4.0 in•lb maximum
Spring Return Selector Switches:	5 in•lb to stop, 0.2 in•lb to return
Illuminated Push Buttons and Push-to-Test Pilot Lights	5.6 lb maximum
2-Position Push-Pull	9 lb maximum push or pull
3-Position Push-Pull	12 lb maximum push to in position or pull to center position (15 lb maximum pull to out position)
Contact Blocks:	
800T-XA	1 lb
Logic Reed	1 lb maximum
Sealed Switch	3 lb maximum at 0.205 in. plunger travel
Stackable Sealed Switch	1 lb maximum
Environment	
Temperature Range	Operating: -4...+13 °F (-20...+55 °C) Storage: -40...+185 °F (-40...+85 °C)
Note: Operating temperatures below freezing are based on the absence of freezing moisture and liquids.	
Humidity	50% at +104 °F (+40 °C)

* Performance Data — See page Important-3.

⊛ External thread major diameter: 1.034 in. max., 1.024 in. min. Internal thread minor diameter: 0.958 in. min., 0.970 in. max.

Standard Contact Ratings

Maximum thermal continuous current I_{th} 10 A AC/2.5 A DC.
 Bulletin 800H Type 7 & 9 units with 800T-XA contacts have ratings as follows:

Max. Oprtnl. Volts U_e	Utilization Category		Rated Operational Currents		
	IEC	NEMA	Volts U_e	Make	Break
AC 600	AC-15	A600	120...600	7200VA	720VA
			72...120	60 A	720VA
			24...28⊛	60 A	10 A
DC 600	DC-13	Q600	28...600	69VA	
			24...28⊛	2.5 A	

⊛ For applications below 24V and 24 mA, PenTUFF™, Logic Reed or stackable sealed switch contacts are recommended.

Sealed Switch Contact Ratings

Maximum continuous current I_{th} 5 A.

Max. Oprtnl. Volts U_e	Utilization Category		Rated Operational Currents		
	IEC	NEMA	Volts U_e	Make	Break
AC 600	AC-15	B600	120...600	3600VA	360VA
			0...120	30 A	3 A
DC 300	DC-13	P300	24...300	138VA	
			0...24	5.0 A	

Stackable Sealed Switch Contact Ratings

Maximum continuous current I_{th} 3 A. Bulletin 800T units have control circuit ratings with sealed switch contact blocks as follows:

Max. Oprtnl. Volts U_e	Utilization Category		Rated Operational Currents		
	IEC	NEMA	Volts U_e	Make	Break
AC 300	AC-15	C300	120...300	1800VA	180VA
			0...120	15 A	1.5 A
DC 150	DC-13	Q150	24...150	69VA	
			0...24	2.5 A	

Logic Reed Contact Ratings

Maximum: 150V AC, 0.15 A, 8 VA and 30V DC, 0.06 A, 1.8 VA.

Should only be used with resistive loads.

PenTUFF™ (Low Voltage) Contact Ratings

Minimum DC: 5V, 1 mA

Maximum thermal continuous current I_{th} 2.5 A AC/1.0 A DC.

Bulletin 800H units with 800T-XAV contacts have ratings as follows:

Max. Oprtnl. Volts U_e	Utilization Category		Rated Operational Currents		
	IEC	NEMA	Volts U_e	Make	Break
AC 300	AC-15	C300	120...300	1800VA	180VA
			0...120	15 A	1.5 A
DC 150	DC-13	R150	24...150	28VA	
			0...24	1.0 A	



