



Description

The Bulletin 802M compact pre-wired limit switch is factory sealed to meet the demanding requirements for NEMA 1, 4, 6P and 13 enclosures. Outstanding features designed into the switch make it ideal for wet environments and washdown applications.

A wide variety of operating heads and operating levers are available. Operating heads can be mounted in four positions, 90° apart.

Applications

The Bulletin 802M is designed for dry and wet applications. The superior sealing system has been developed to protect against dust, dirt, and fluids normally found in industrial environments. The device has passed harsh environmental testing such as alternately drenching with a liquid and exposing to dust and abrasive grit with the switch operating 250 times per minute.

Specifications

Enclosure Rating	NEMA 1, 4, 6P, 13 and IP67
Pollution Degree	3
Certifications	UL Listed, CSA Certified and CE Marked for applicable directives
Ambient Temperature [C (F)]	0...+80° (+32...+18°) minimum temperature based on the absence of freezing moisture or water.

AC Contact Rating (Maximum per Pole, 50 or 60Hz, 2 Circuits Same Polarity)

NEMA Rating Designation	Max Voltage	A		Continuous Carrying Current	VA	
		Make	Break		Make	Break
A600 AC-15	120	60	6.00	10	7200	720
	240	30	3.00	10	7200	720
	480	15	1.50	10	7200	720
	600	12	1.20	10	7200	720

AC Contact Rating (Maximum per Pole, 50 or 60Hz, 4 Circuits Same Polarity)

NEMA Rating Designation	Max Voltage	A		Continuous Carrying Current	VA	
		Make	Break		Make	Break
B300	120	30	3.00	5	3600	360
	240	15	1.50	5	3600	360

DC Contact Rating (Maximum per Pole, 2 Circuits Same Polarity)

	Nominal Voltage	A	Continuous Carrying Current (A)	
	24	1.1	5	

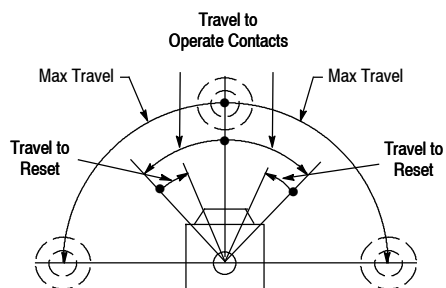
The switch is often used in applications subject to washdowns, streams of coolant, or occasionally submerged in fluids commonly found on machines or in industrial processes. This limit switch is being used successfully in High Water Content Fluid (HWCF) applications. Contact your local Rockwell Automation sales office or Allen-Bradley distributor for applications where potentially corrosive fluids are of a particular concern.

Features

- Pre-wired and factory sealed
- Corrosion-resistant housings
- Corrosion-resistant hardware (802MC)
- Side rotary, adjustable top and top or side push styles with and without rollers
- Double-break fine silver contacts

Pre-Wired—Factory Sealed

- Lever Type • Spring Return page 5-17
- Lever Type Neutral page 5-19
- Position • Spring Return
- Lever Type • Maintained . . . page 5-20
- Contact
- Lever Type Sequential • . . . page 5-21
- Spring Return
- Push Type • Spring Return . . . page 5-22
- Wiring Diagrams page 5-24
- Modifications page 5-27
- Accessories page 5-29

802M Lever Type • Spring Return**Pre-Wired—Factory Sealed Switches****Range of Operation**Complete Switch
Without LeverOperator Head
Only

Switch Body Only

Product Selection

No. of Circuits	Lever Movement vs. Contact Operation	Torque to Operate (Max.)	Travel to Operate Contacts (Max.)	Max Travel	Travel to Reset Contacts (Max.)	Cat. No.		
						Complete Switch w/o Lever ❶	Operator Head Only	Switch Body Only ❶
2	Clockwise or Counterclockwise	1 2 3 4	15°	86°	6°	802M-AY5	802M-AX	802M-XY5
		1 2 3 4	8°		4°	802M-HY5	802M-HX	
	Clockwise	1 2 3 4	15°		6°	802M-A1Y5	802M-A1X	
		1 2 3 4	8°		4°	802M-H1Y5	802M-H1X	
	Counterclockwise	1 2 3 4	15°		6°	802M-A2Y5	802M-A2X	
		1 2 3 4	8°		4°	802M-H2Y5	802M-H2X	
4	Clockwise or Counterclockwise	1 2 3 4 5 6 7 8	15°	86°	6°	802M-ATY5	802M-AX	802M-XTY5
		1 2 3 4 5 6 7 8	8°		4°	802M-HTY5	802M-HX	
	Clockwise	1 2 3 4 5 6 7 8	15°		6°	802M-A1TY5	802M-A1X	
		1 2 3 4 5 6 7 8	8°		4°	802M-H1TY5	802M-H1X	
	Counterclockwise	1 2 3 4 5 6 7 8	15°		6°	802M-A2TY5	802M-A2X	
		1 2 3 4 5 6 7 8	8°		4°	802M-H2TY5	802M-H2X	

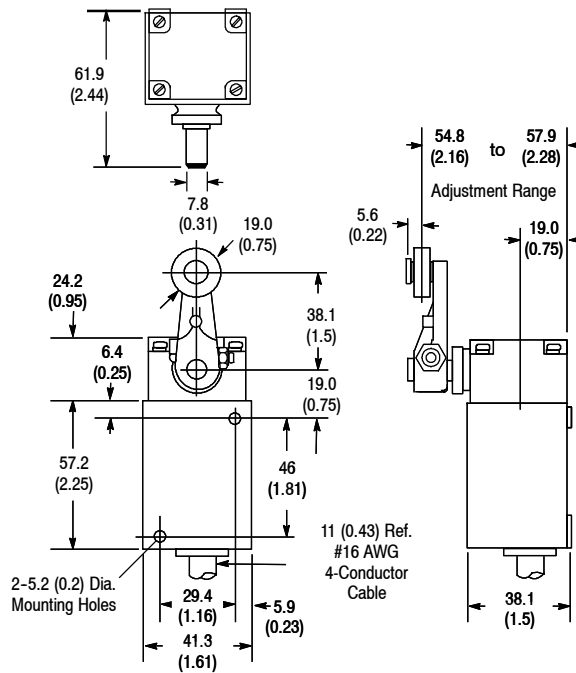
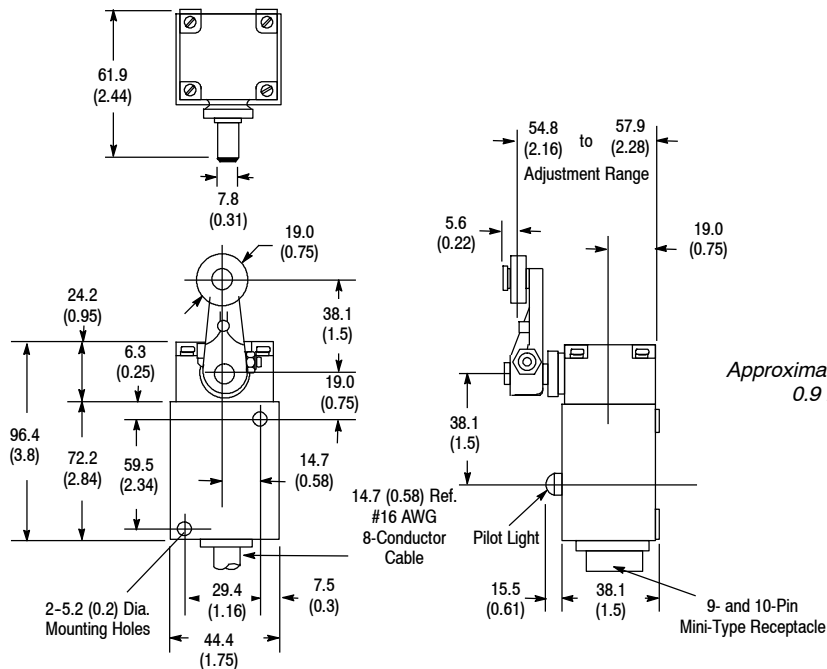
❶ The standard length of STO cable is 1.52 m (5 ft). For other lengths see Modifications and Accessories.

Levers—See page 5-130 for a complete listing of operating levers.**Wiring Diagrams**—See page 5-24.**Modifications and Accessories**—See page 5-27.

802M Lever Type • Spring Return

Pre-Wired—Factory Sealed Switches

Approximate Dimensions [mm (in.)]

2-Circuit**4-Circuit**

Note: Mounting foot adaptor as shown on page 5-23 is for use with 2-circuit 802M type switches only.

Levers—See page 5-130 for a complete listing of operating levers.

Wiring Diagrams—See page 5-24.

Modifications and Accessories—See page 5-27.