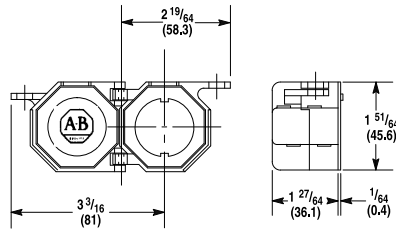
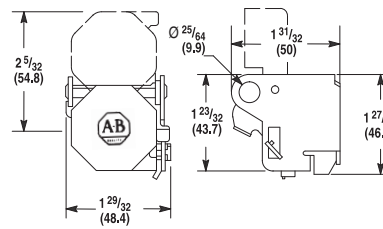


Dimensions in inches (millimeters). Dimensions are not intended to be used for manufacturing purposes.

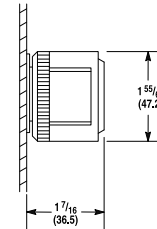
Accessories



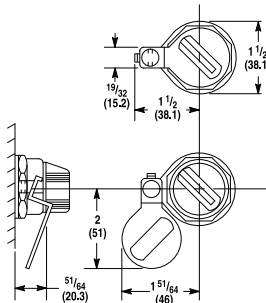
Push Button Padlocking Cover
(not for use with Jumbo Mushroom Head devices)
Shipping Wt. 1 oz (0.03 kg)



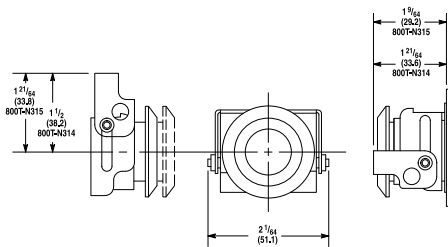
Selector Switch and Potentiometer Unit Padlocking Cover



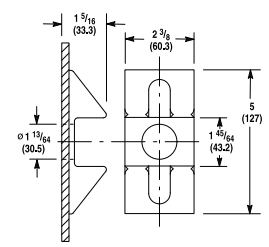
Protective Ring and Push-Pull Illuminated or Non-Illuminated Operators



Selector Switch Padlocking Attachment

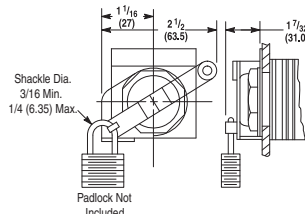


Push-Pull Padlocking Attachment and Metal Mushroom Push Button Padlocking Attachment

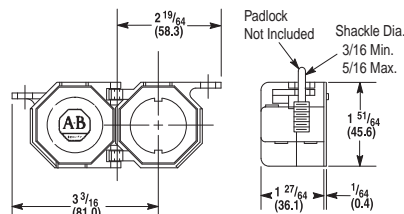


Ramp Guard for Push-Pull Illuminated or Non-Illuminated Operators

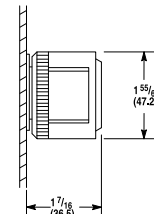
Accessories (Bul. 800H Only)



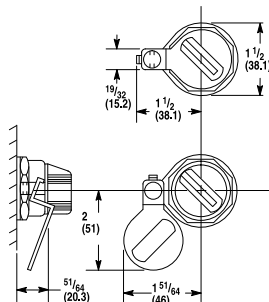
Locking Attachment for Extended, Non-Illuminated Push Buttons



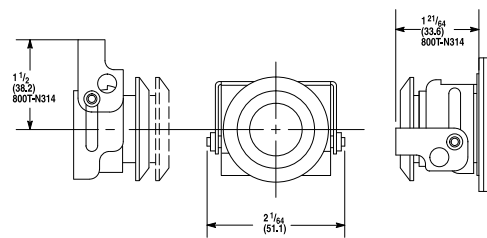
800H-N140 Locking Cover for 2-Position Non-Illuminated Maintained Twist or Pull Release and Standard Knob Selector Switch (1-5/8 (41.3) Mushroom Head only)



Protective Ring for 2-Position Push-Pull/Twist Illuminated or Non-Illuminated Operators



Non-Illuminated Selector Switch Padlocking Adjustment



Push-Pull/Twist Padlocking Attachment